

# 2024 – 2025 ANNUAL REPORT



# TABLE of CONTENTS

<b>4</b> Mission, Vision, Core Values, and Goals	<b>26</b> CREC Foundation
<b>4</b> Diversity, Equity, and Inclusion Statement	<b>28</b> Individual Donors
<b>5</b> Executive Director’s Letter	<b>30</b> Funding Agencies
	<b>31</b> Organization Chart
<b>6</b> Did You Know?	<b>32</b> Regional Collaboration & Partnerships
<b>7</b> How CREC Sets Priorities	<b>34</b> Budget Statement
<b>7</b> Actual Revenue	<b>35</b> Projected Budget Statement
<b>10</b> Innovation	<b>36</b> Governance
<b>14</b> Inspiration	<b>37</b> Services Matrix
<b>18</b> Inclusion	
<b>22</b> Impact	

# EXCELLENCE IN EDUCATION



# We are CREC | Excellence in Education



## OUR MISSION

Equity, excellence, and success for all through high-quality educational services.



## OUR CORE VALUES



EXPECT EXCELLENCE



ACT WITH COURAGE



DEMAND EQUITY



EMBRACE COLLABORATION



## OUR VISION

To become our member districts' primary resource to facilitate collaborative efforts that create equitable and sustainable educational opportunities, assist in maximizing district and regional resources, and advance successful educational practices for all learners at all ages.

## LAND ACKNOWLEDGMENT

In partnership with the Akomawt Educational Initiative, CREC established a Land Acknowledgment Statement in 2022 to recognize Native and Indigenous resilience and strength. CREC employees are encouraged to read this statement before any event held in CREC's spaces:

*We would like to begin by acknowledging that the land on which we gather is the ancestral territory of the Tunxis, Sicoag, Pocumtuc, Wangunk, Poquonook, Podunk, Quinnipiac, Massacoe and Hammonasset Peoples who have stewarded this land throughout the generations. We also acknowledge the five state & federally recognized tribal nations that exist in Connecticut today: the Mashantucket Pequot, Mohegan, Golden Hill Paugussett, Eastern Pequot, and Schaghticoke people. We support their sovereignty as tribal nations now and into the future.*



## DIVERSITY, EQUITY, & INCLUSION STATEMENT

CREC strives to understand and confront the symptoms and causes of racism and prejudice—ranging from biases to aggressions to discriminatory policies, practices, and traditions—that harm people from systemically marginalized groups or that benefit privileged groups. CREC staff and students acknowledge and respect people of all identifiers, such as race, socioeconomic status, gender identity and expression, education, age, ability, ethnicity, culture, sexual orientation, language, nationality, religion, and veteran status.



## ANTI-RACIST COMMITMENTS

CREC expects members of our community to:

- Understand that systemic racism impacts each person's lived experience.
- Uplift the voices of those from systematically marginalized groups.
- Address the needs of those most harmed by ongoing systemic racism.
- Challenge beliefs by naming when racism arises in a group or individually.
- Provide our community a space to learn, grow, and engage in anti-racist practice.
- Build community through conversation to repair harm and strengthen relationships.

## EXECUTIVE DIRECTOR'S LETTER

As I close a decade of leadership at CREC, there is a sense of gratitude and much reflection and introspection.

I quickly learned in 2016 when I arrived at CREC that this was a very special place. The roots that John Allison, CREC's founding Executive Director, planted in 1966 are still blossoming in CREC's success today. I have tried to be true to the original mission of this organization to serve our region with high-quality programs and services in collaboration with our partner districts.

I could list the many accomplishments of the past decade, but I risk leaving some out. I will share a few moments that capture the spirit that embodies what it means to me to be a "CRECie."

- Watching the smiling faces of children receiving a backpack full of supplies to assure they have a great start to their school year at CREC's annual Back to School Block Party.
- Leading an effort to bring community partners together and open a relief center to support families from Puerto Rico and other Caribbean islands displaced by a hurricane and forced to relocate. A center that served over 600 families, going from concept to reality in less than a month.
- Having the pleasure of sharing FallStaff, our annual employee convocation, with over 2,000 fellow CRECies. It is one day—really one morning—a year, but a celebration of the amazing work we do every day. Being in the same room with the very people I am most grateful for - the dedicated staff who make things go in the multitude of schools and programs we operate
- Taking risks to improve the educational programs and support in our region such as becoming a Head Start provider or creating a Teacher Residency Program to diversify Connecticut's teaching workforce.



CREC today certainly looks very different from the way it did in 1966, and it is significantly different from the way it was when I started, ten years ago, in 2016. Every aspect of our operations and programs has been restructured to ensure we are meeting the needs of our students, their families, and our partner districts in the Capitol Region.

Thank you to CREC's leadership team and every member of our staff for living our mission and core values every day. Expect Excellence, Embrace Collaboration, Act with Courage, and Demand Equity.

Thank you to CREC's 34 member districts for their collaboration and partnership. From each district, we gain our CREC Council Members who serve not only their local Board of Education but also serve as CREC's governing board.

John Allison helped me understand that CREC is more than a place to work - it is a concept. An organization that exists to develop regional ideas in a state built on local control. It requires collaboration, perseverance, and ingenuity to build structures and programs that make educational opportunities available to every student. I have been honored to serve as CREC's fourth Executive Director. I know the organization will be in great hands under the fifth Executive Director, Desi Nesmith. I wish him well as he guides CREC in the coming years.

Sincerely,

Greg J. Florio, Ed.D.

# DID YOU KNOW ?



8,821

students received a robust theme-based education in our 16 Magnet Schools and 2 Magnet Programs

2,402

students participated in the Hartford Region Open Choice Program, attending school in 27 towns



Our dedicated staff of

2,659

full-time employees is the heartbeat of the organization

88

Professional learning workshops spanning topics like equity, curriculum, and Social Emotional Learning, enriched the skills of

2,495

participants

CREC vehicles safely transported students to and from school

11,443,762

miles total –the equivalent of over 26 trips to the moon and back



1,180

students received special education services in CREC's 8 Student Services Programs



The CREC Region's 34 Member Districts represent our council and the majority of our schools and programs' sending towns

Avon	New Britain
Berlin	Newington
Bloomfield	Plainville
Bolton	Portland
Bristol	Region 10 (Burlington & Harwinton)
Canton	Rocky Hill
Cromwell	Simsbury
East Granby	Somers
East Hartford	Southington
East Windsor	South Windsor
Ellington	Suffield
Enfield	Vernon
Farmington	West Hartford
Glastonbury	Wethersfield
Granby	Windsor
Hartford	Windsor Locks
Hartland	
Manchester	

## How CREC Sets Priorities

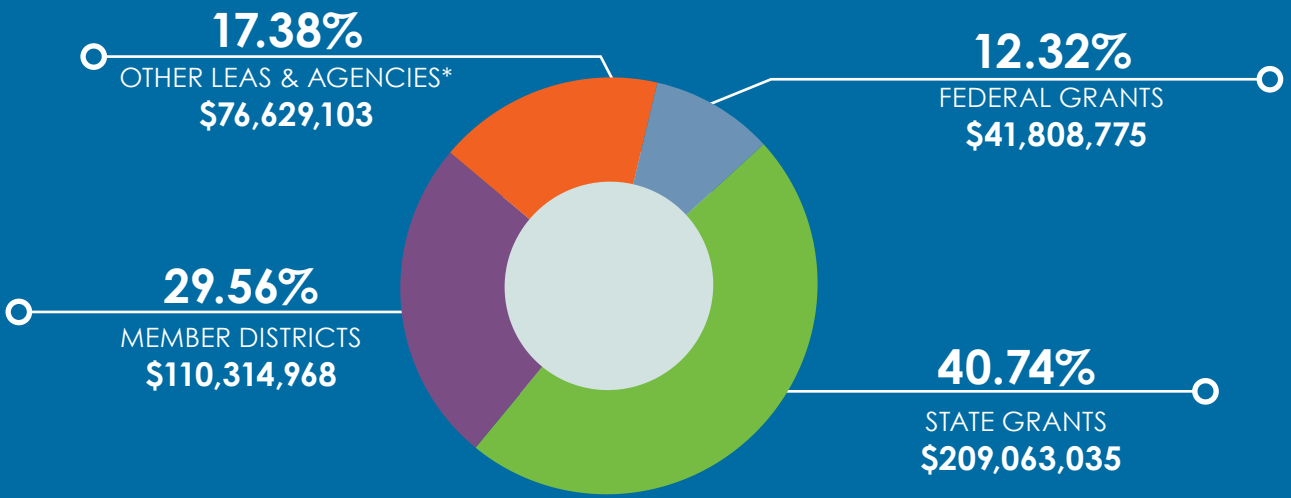
CREC works closely with many partners to ensure that our agency's priorities and our programs and services respond to the growing and ever-changing needs of our varied clientele. CREC works diligently to listen to and probe our partners and clients for understanding and perspective. During 2020-2021, CREC continued to rely on feedback from:

- Advisory committees that help set program-specific priorities with direct service programs
- CREC's Board of Directors and the CREC Council, representing Board of Education members from urban, suburban, and rural districts, meet monthly to discuss problems affecting education in our region and encourage CREC to pursue an active role in providing high-quality, cost-effective solutions
- Ongoing meetings held with the Hartford Area Superintendents' Association, curriculum directors, special education directors, personnel directors, Connecticut Association of School Business Officials, Connecticut Association of Boards of Education, and meetings with the State's Commissioner of Education
- Needs assessments and planning documents from state agencies as they reflect the needs of the capital region

- The strategic planning committees of organizations, primarily the Connecticut State Department of Education and the Capitol Region Partnership and its member agencies
- Regular meetings with other regional service agencies to assess needs and discuss the ways those needs can be met through cooperative efforts
- All internal divisions and programs through an ongoing, comprehensive, and collaborative strategic planning process that evaluates the changes and growth in demand for services
- Stakeholder surveys and program evaluations that gather information about the targeted needs of our clients, the accessibility of our programs, and the quality of our services

Information from these and other sources is analyzed and evaluated by CREC's leadership. CREC's cross-divisional internal staff leadership team studies emerging needs and examines the interdepartmental strengths which could be matched to meet those needs. The results are shared with the team of CREC program managers. Strategies are then devised for how to implement the identified services. Feedback, flexibility, and responsiveness are key components to our success.

Actual Revenue  
\$437,815,881



\*Includes sales outside CREC districts, sales to individuals, contracts to state agencies, and other sales  
Source: Capitol Region Education Council Business Services Department  
Note: Total Revenues are Governmental Funds - no 700, no 800, no transfers - Exhibit IV of CAFR

...

# INNOVATION



# INSPIRATION

# INCLUSION



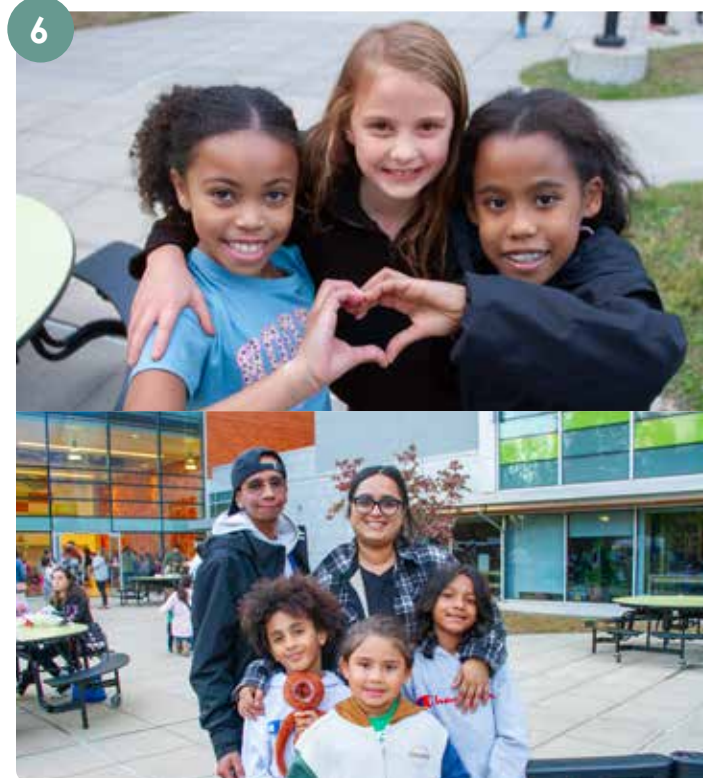
# IMPACT

# INNOVATION

CREC Athletics thrived this year, with many teams winning conference championships and competing in State playoffs.



# INNOVATION



CREC Magnet Schools seniors boasted a

# 90.5%

four-year graduation rate,  
.6% better than the state of  
Connecticut overall.

**1 THE CONNECTICUT TEACHER RESIDENCY PROGRAM** completed orientation for their 2025 cohort.

**2 CREC SCHOOL CHOICE** sponsored the "CREC Experience" at Westfarms to give mall-goers all the information they needed to apply to CREC schools and Open Choice.

**3 CREC UNIVERSITY OF HARTFORD MAGNET SCHOOL** first-graders collaborated with the UConn Dairy Club for a demonstration on milking cows and ice cream making.

**4 RIVER STREET SCHOOL** built a butterfly garden in honor of a staff member who passed away, and released butterflies into the garden after watching them develop.

**5 ELLA—EMPOWERING LATINAS LEADERSHIP ALLIANCE** was formed by girls at CREC Academy of Computer Science and Engineering and CREC Greater Hartford Academy of the Arts High School to empower Latina students to be influential leaders in their communities.

**6 DISCOVERY ACADEMY** held their annual family night in the fall.

**7 MONTESSORI TRAINING CENTER NORTHEAST** participated in the 8th Annual Montessori Nordic Conference in Uppsala, Sweden.

# INSPIRATION

CREC Ana Grace Academy of the Arts hosted a Book Signing Event with stage and screen performer Anika Noni Rose for the release of her book *Tiana's Perfect Plan*.





In May 2025

# 72%

of CREC's over 2600 employees participated in an Employee Engagement Survey to help make CREC a wonderful place to work.



1. **CREC MUSEUM ACADEMY** hosted their semiannual exhibition night.
2. **CREC MAGNET SCHOOLS** hosted a district-wide Art Show at Parkville Market in Hartford. The art was on display for the entire month of March.
3. **CREC ANA GRACE ACADEMY OF THE ARTS** middle school students performed "Once On This Island" for their annual musical.
4. **CREC GREATER HARTFORD ACADEMY OF THE ARTS** DIRECTOR EMERITUS, **KIM STROUD** was honored by CREC for over 30 years of dedication and service.
5. **CREC SOUNDBRIDGE** raised over \$2,000 for the annual Walk4Hearing at Dunkin Park.
6. **CREC COMMUNITY EDUCATION SERVICES** celebrated graduates in partnership with CT State Community College Manchester's Medical Office Assistants Training Program.
7. **DISCOVERY ACADEMY** second- graders performed their original musical "Dinosaur Time Machine."
8. **CREC MAGNET SCHOOLS** trained middle and high school students as "Circle Keepers," a restorative practice used for conflict resolution and peer mediation.



# INCLUSION

CREC Central hosted a Parranda, a Puerto Rican holiday celebration where students from CREC Academy of Science and Innovation sang aguinaldos and played traditional instruments.





1



2



3



4



5

1. **CREC EMPLOYEES** celebrated 10, 20, 25, 30, 35, 40, and 45 years of longevity with CREC at banquet in May. The 10-year group is pictured.

2. **CREC GREATER HARTFORD ACADEMY OF THE ARTS HIGH SCHOOL** arranged an Indigenous Community Collaboration Event for Native American Heritage Month at CREC Ana Grace Academy of the Arts.

3. **CREC MAGNET SCHOOLS** held their 4th Annual Racial Justice Action Showcase at the Theater of the Performing Arts.

4. **CREC'S JUNTOS AVANZAMOS EMPLOYEE NETWORK GROUP** hosted their first cafecito, a traditional Hispanic/Latinx gathering, featuring coffee and connection.

5. **CREC'S WOMEN'S CIRCLE EMPLOYEE NETWORK** hosted their first "Packing with Purpose" donation event and gathered items for local domestic violence shelters.

6. **COMMUNITY EDUCATION SERVICES** hosted their annual International Day for sharing the diverse cultures of their adult learners.

7. **RIVER STREET SCHOOL** held a Candy Land themed prom for their students.

8. **JUNTOS AVANZAMOS** was out in the community at the CICD Puerto Rican Day Parade celebrating Hispanic Heritage Month.

9. **RIVER STREET SCHOOL** held their annual Walk for Autism.

10. **CREC HEAD START** celebrated Mental Health Day.



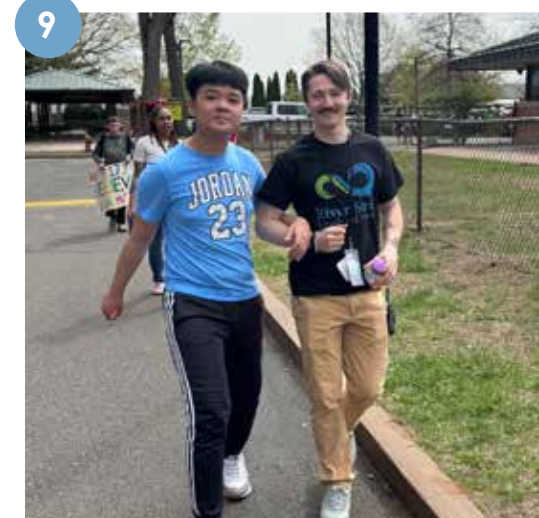
6



7



8



9



10

On the Employee Engagement Survey  
**Inclusion, Empowerment, and Co-worker Relationships**

were the top drivers of CREC's success with employees.

The annual Back to School Block Party was another smashing success providing resources and backpacks to over 1500 students.



# IMPACT

# IMPACT



Employee Engagement increased

# 8%

overall from two years ago, according to the Survey, with high marks for culture and environment.



**1. CREC ACADEMY OF AEROSPACE AND ENGINEERING 6-12** students speak with Governor Lamont about Magnet School funding.

**2. CREC'S PROJECT PREVENT TEAM**, a school-based mental health tiered service program, hosted "Days of Prevention and Wellness" at all CREC Secondary Schools.

**3. MONTESSORI TRAINING CENTER NORTHEAST** Assistance to Infancy, Primary, and Elementary level graduates pose for a photo.

**4. PROJECT PREVENT'S** Day of Prevention and Wellness with middle-schoolers at CREC Ana Grace Academy of the Arts.

**5. COMMUNITY EDUCATION SERVICES** graduates celebrated the completion of their ESL program.

**6. CREC EMPLOYEES** participate in the annual National Rebuilding Day with Rebuilding Together Hartford, updating a home in the South End of Hartford.

**7. CREC COMMUNITY EDUCATION SERVICES** celebrated graduates in partnership with CT State Community College Manchester's Central Sterile Processing Technicians Training Program.

**8. CREC HEAD START** helped students receive early childhood intervention and families receive quality, affordable childcare.

**9. CREC GREATER HARTFORD ACADEMY OF THE ARTS HIGH SCHOOL** hosted a Student Summit at Rentschler Field in East Hartford.

# CREC FOUNDATION

This year, the CREC Foundation continued its mission of opening doors for students by focusing on two powerful initiatives: the 10th Annual CREC Foundation Golf Tournament and Scholarship Dinner, and a new partnership with the Ana Grace Project to support a special group of CREC arts students.

### 10th Annual CREC Foundation Golf Tournament & Scholarship Dinner

The Foundation celebrated a milestone year for its signature fundraising event, which once again brought together business partners, community supporters, and alumni to raise essential scholarship funds for CREC students. The 10th Annual events attracted over 200 golfers this year—shattering our participation record! Proceeds from the tournament support renewable, multi-year scholarships for graduates who have overcome adversity and demonstrated exceptional perseverance. Thanks to the generosity of sponsors and golfers, the Foundation continued its tradition of awarding substantial financial support that helps students access and persist in their post-secondary education.

### A Special Partnership With The Ana Grace Project

In a meaningful new collaboration, the Foundation partnered with the Ana Grace Project to honor the first cohort of seniors at CREC Greater Hartford Academy of the Arts High School who began their educational journey as kindergartners at CREC Ana Grace Academy of the Arts Elementary School. Ten students were surprised with a *Love Wins Founder's Award*—financial support to use toward any post-high school plans, with assistance from the CREC Foundation to steward their awards.

The announcement became a reunion filled with joy as students were joined by their former teachers, principals, and families (pictured below). The moment honored not only their achievements, but the enduring love, community, and creativity that define Ana Grace's legacy. The Foundation is deeply grateful to Nelba and Jimmy Márquez-Greene for their continued partnership and unwavering support of CREC's arts programs.

Together, these initiatives reflect the CREC Foundation's commitment to expanding opportunity, celebrating student success, and strengthening the community bonds that make CREC a place where every learner can thrive.



OVER  
\$25,500

were awarded through the CREC Foundation and the Hartford Region Open Choice Program to students who attended high school in the region to help achieve college goals

# CREC FOUNDATION

# Individual Donors

Olga Agosto  
Denise Agramonte  
Christopher Alexander  
Daniel Ali  
Carlos Aldave  
Devon Aldave  
Amato Aliberti  
Rema Alleyne-Manga  
Aura Alvarado  
Erin Andrus  
James Arbout  
Zhanise Arline  
Moriha Aronowitz  
Susan Ashe  
Elizabeth Banning  
Kathleen Bannon  
Tim Barber  
Jay Barbuto  
Gerald Barrett  
David Barrieau  
Christopher Bate  
Diana Beardsley  
Camille Bent  
Lesley Bentil  
Elaine Bergeron  
Delixandra Bermudez-Mendez  
Kevin Berstene  
Bhanmatie Bhoj  
Raegan Bishop  
Gregg Blackstone  
Kelene Bolden  
Arielle Booker  
Stephen Bordeau  
Debra Borrero  
Callie Bostic-Gardner  
Caleb Bostic-Gardner  
Ankarah Boughton  
Steve Bowen  
Elaina Brachman  
Billie Jo Bradley  
Claude Bradley  
Thomas Brodnitzki  
Darnell Brown  
Tyler Bruno  
Traceyon Buchanan-Townsend  
Rossio Burgos  
Barbara Burke  
Alysa Burke-Worthy  
Nicholas Campagna  
Christopher Campbell  
Toussaint Careathers  
Hannah Carrafiello  
Tanya Carrafiello  
Brainard Carter  
Greg Carter

Edward Casares  
Gemma Casciano  
John Cashman  
Sara Castle  
Ana Castro  
Pierrette Centeno  
Gina Chace  
Nicholas Chanese  
Dez Chapman  
Julie Christianson  
Alison Cianciolo  
Jerome Clapis  
Kelly-Ann Clark  
Nakia Claypool-Wilson  
Glorimar Claudio  
Ryan Coe  
Mary Margaret Coffield  
Paul Colbenson  
James Colby  
Diana Colcord  
William Connolly  
Storm Cooper  
Charles Copeland  
David Cormier  
Jose Cotto  
Norlean Cozzolino  
Melissa Craig  
Eric Crawford  
Karla Cruz  
Sandra Cruz-Serrano  
Rebekah Curtis  
Rosa Darzon Silva  
Christine Dalenta  
Romina D'Angelo  
Andrew Davis  
Kimberly Davis  
Francesca Day  
Albert Dee  
Gabriella DeJesus Brown  
Joel Dejong  
Bryan De La Cruz  
Anaida Delgado  
Samantha Diaz  
Maris Dillman  
Richard DiMauro  
Sharon DiSilvestro  
Eva Doll  
Bruce and Allison Douglas  
Sasha Douglas  
Aleta Dubecky  
Christopher Dubois  
Joan Duffy  
Charles Dye  
Alexis Egan  
Claudia Elfreich

Aaron Ellerbe  
Kathleen Ellis  
Lisa Ellison  
Jeannette Estrada  
Dondre Evans  
Andre Ezell  
Renita Ezell  
Ashlyn Fagan  
Michelle Farr  
Luz Feliz Ayala  
Amy Ferguson  
Kyle Ferguson  
Lisa Ferreira  
Lisa Fiano  
Carlos Figueroa  
Sarah Fitzsimons  
Susan Flanagan  
Greg and Rose Florio  
Jonathan Fontaine  
Benjamin Foran  
Raven Ford  
Shannon Francis  
Robin Frost  
Jestine Funnie-Berger  
Dayanara Galas  
Jessica Gallagher  
Catherine Geoghegan  
Brianna Gibs  
Patrick Gill  
Tanya Gilman  
Sharon Girard  
Thomas E. Giroir  
Robert Gold  
Erica Gomez  
Elsie Gonzalez  
Carmen Gonzalez-Medina  
Melanie Gordon  
Charnaie Gordon  
Brian Greenleaf  
Marie Grillo  
Germaine Gumbs-James  
Liana Guzman  
Kim Guzzo  
Kaylin Hadley  
Pamela Hamad  
Donna Hamre  
Lisbeth Harrison  
Rich Haskell  
Ron Helfrich  
Janee Hendricks  
Nilda Hernandez  
Yesenia Hernandez  
Josiah Hills  
Brendan Hines  
Marla Hinz

Eric Hoffman  
Denise Holter  
Kristine Howell  
Charles Jama II  
Jennifer Jepsen  
Adam Johnson  
Courtney Johnson  
Dhamani Johnson  
Walter Johnson  
Holly Jones  
Lauchland Jones  
Kristen Juda  
Scott Kapralos  
Tracy Kane  
Amy Karwan  
Ariel Keen  
Sharon Keenan  
Shane Kelly  
Laura Kelliher  
Anna Klosinska-Salazar  
Giovannina Koch  
Senada Korkutovic  
Kirk Laakso  
Brian Labodycz  
Marian Laboy  
Diana Lamenzo  
Shauna Landrigan  
Cynthia LaPalme  
Jason Larose  
Sarah Larsen  
Brenda Laureano-Geer  
Tanya LaVallee  
Jay Lawlor  
David Lazicki  
Jessica Leon  
Michelle Leone  
Chellie Leslie  
Alanna Levesque  
Sonia Levy Reid  
Niti Lindsay  
Barbara Liistro  
Jeff Linstone  
Dana Little  
Carrie Lombardo  
Daysi Lora-Perez  
Kimberly Lyznicki  
Antonella Maccarone  
Roberta Madole  
Joshua Madore  
Carmelo Magro  
Kelly Maio  
Latoya Malcolm  
Juana Maldonado  
Moriha Maloney  
Penny Manion

Veronica Marion  
Catherine Markow  
Michael Martin  
Patricia Martineck  
Laura Martinez  
David Matheson  
Nora Matthews  
David Matulis  
Jay Maule  
W Wilson Keithline and  
Beth Mazadoorian  
Ashley Mazzoli  
Heather McBride  
Rhonda McBride  
Stacey McCorison  
Kelly McDermott  
Paula McDonald  
Jo McHugh  
Malik McKnight  
Kimberly Mearman  
Ali Melonpoulos Fleury  
Tricia Meltser  
Stephen Merone  
Kelly Meyer  
Jessica Michaud  
Ada Miranda  
Eduardo Miranda  
Sandy Mitchell  
Dudley and Cheryl Molina  
Kimberly Monroe  
Victor Morgenthaler  
Majorie Morrissey  
Michelle Moss  
Lori Mullooly  
Margaret Murphy  
Peter Murphy  
Katherine Myers  
Barbie Nadal-Cristofaro  
Antonio Napoleone  
Nicole Natale  
Katherine Nazario  
Yadira Negron  
Kimberly Neild  
Dana Nenninger  
Desi Nesmith  
Celia Noe  
Eleonora Nogareda  
Kristen Nolan  
Dawn Norris  
Tasaya Northover  
Kenneth Ochs  
Viviana Ofray  
Kara Ogonji  
Lauren O'Leary  
Raul Ortiz  
Myrakle Otero

Michele Ouellette  
Sandra Ouellette  
Roselyn Pace  
Sixmaritt Pagan-Pena  
Kristen Palmer  
Sally Palomino  
Denise Patterson  
Michael Patterson  
Amy Pecora  
Blanca Perez  
Danielle Perry  
Diana Perry  
Elaine Pertillar  
Aisha Petteway  
Christopher and Tarrabeth Peters  
Edna-Jo Piccirillo  
Marquise Pina  
Kristen Pinsonneault  
Nichole Plessy Cloud  
Brittany Plummer  
Jenna Podeswa  
Malissa Postell  
Kennan Poulakos  
John Pratt  
Mark Prelli  
Claudia Provenzano  
Diane Provenzano  
Joe Ptak  
Melissa Quiros  
Ruixing Quayang  
Katherine Raftery  
Gomathi Ramachandran  
Kelsie Ramos  
Lindsey Ramos  
Kathy Randall  
Banning Rauls  
Elizabeth Reed-Swale  
Kristen Rinas  
Ammie Rivera  
Gladys Rivera  
Chelsea Roberts  
Glynis Roberts  
Kimberly Roberts  
Patrick Robitaille  
Curtis Rodriguez-Porter  
Douglas Rogers  
Garry Roman  
Sandra Roman  
Lydia Romero  
Kahia Rookwood  
Maria Rosa  
Jacklyn Rouse  
Tina Ruggerio  
Betsey Ruiz  
Chantel Russell  
Nicholas Russillo

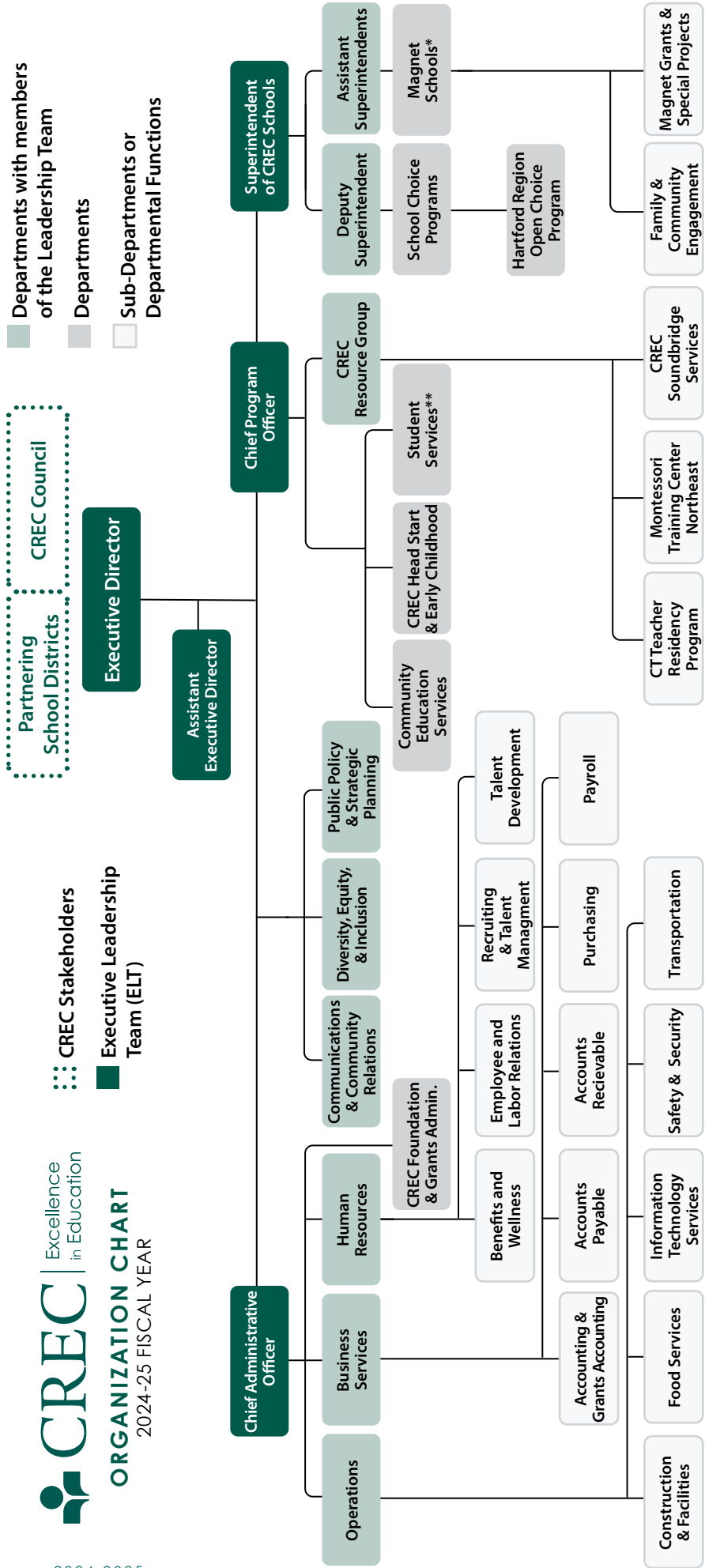
Angiolino Russo  
Shelly Rustek-Esten  
George Sailor  
Pamela Sailor  
Yllka Sakaj  
Lisiane Santos Dias  
Susan Schlank  
Tonea Scott  
Shandra Scott-Brown  
Sarah Seals  
Katherine Senerth  
Grace Serrano  
Richard Serrano  
Danah Serrano-Baez  
Ana Serrano-Stanco  
Clare Serrantino  
Elise Shatto  
Alicia Simpson  
Violet Sims  
Beth Slack  
Myriam Slattery  
Kerrian Smith  
Tyra Smith  
Amirshekari Soleimani  
Michael Sorano  
Vanessa Sosa  
Anthony Souppa  
Mary Ellen Sposato  
Kurt Stanco  
Stacy Stefanowich  
Sara Steinberg Forman  
Matthew Steinkraus  
Joyce Sternberg  
David Stewart  
Olivia Strelevitz  
Nakisha Strickland  
Jessica Sullivan  
Jessica Sullivan  
Sean Sullivan  
Timothy Sullivan, Jr.  
Troy Sullivan  
David Sutherland  
Mayra Suarez  
Shana Suarez  
Aiyana Sykes  
Richard Tardiff  
Heather Tartaglia  
Lynn Tayrol-Deren  
Lydia Tedone  
Caitlin Tenney  
Mary Jo Terranova  
Michael Terranova  
Rudolph Thomas  
Merissa Thompson  
Rebecca Thomson  
E. Mason Thrall

Jennifer Tierney  
Trisila Tirado  
Alicia Torres  
Melissa Torres  
Jennifer Traks  
Rebecca Trapp  
Zharias Tsahalais  
Jenifer Tuller  
John Tusch  
Gigette Ursone  
Kelvin Valencia  
Deborah Van Wyngaarden  
Wanda Vargas  
Edward Velazquez  
Katy Vicchitto  
Sarah Vocca  
Jeffrey Walker  
Nargea Walters  
Warren Ward  
Rebecca Warkoski  
Shanta Warren  
Maryam Wassil-Wardak  
Nicholas Wert  
Jessica White  
Aideen Whittaker  
Akilah Williams  
Christina Williams  
Marvin Williams  
Nattaneal Wilson  
Kimberly Winfield  
Jill Wnuk  
Andrew Wolfe  
Darlene Wolliston  
Andrea Wright  
Chan David Wu  
Anthony Yacavone  
Katherine Yaport  
Jill Zaino  
Maritsa Zupka

# 2024-2025 CREC Funding Agencies

National Insurance Services of Wisconsin  
Nellie Mae Education Foundation, Inc.  
New England Donor Services, Inc.  
Northern Trust/Graustein  
Our Piece of the Pie  
Owens, Renz & Lee Company, Inc.  
PIMCO  
Post University  
Precision Concrete Cutting  
Rainbow Graphics  
Ryan T Lee Memorial Foundation  
SofterWare - ION Foundation  
Southside Institutions Neighborhood Alliance, Inc.  
Tau Iota Chapter of Omega Psi Phi  
The Neubauer Building LLC  
The Peter and Carmen Lucia Buck Foundation (PCLB)  
The Simon Konover Company

The Sullivan Investment Group of Janney  
Montgomery Scott LLC  
The UK Online Giving Foundation  
TicketLeap  
TransAmerica Retirement Solutions, LLC  
Transportation Management Solutions  
UCONN Natural Resources Conservation  
United Way of Central & Northeastern CT  
USA Hauling & Recycling  
USI Insurance Services LLC  
Walmart Inc  
Walk for Hearing  
Workers' Compensation Trust  
Z Rink Sports Foundation, Inc.



## \*16 Magnet Schools and 2 Programs

- CREC Academy of Aerospace and Engineering (6-12)
- CREC Academy of Aerospace and Engineering Elementary School (PreK-5)
- CREC Academy of Computer Science and Engineering (9-12)
- CREC Academy of Computer Science and Engineering Middle School (6-8)
- CREC Academy of International Studies (6-12)
- CREC Academy of International Studies Elementary School (PreK-5)
- CREC Ana Grace Academy of the Arts (PreK-8)
- CREC Discovery Academy (PreK-5)
- Glastonbury-East Hartford Magnet School (PreK-5)
- CREC Greater Hartford Academy of the Arts Full Day (9-12)
- CREC Montessori Magnet School (PreK-6)
- CREC Museum Academy (PreK-5)
- CREC Preschool at Progress Drive (PreK 3&4)
- CREC Reggio Magnet School of the Arts (PreK-5)
- CREC University of Hartford Magnet School (PreK-5)
- CREC Academy of Science and Innovation (6-12)
- CREC Greater Hartford Academy of the Arts Half-Day (9-12)
- CREC Impact Academy (9-12)

## \*\*Student Services Programs

- CREC Birth to Three
- CREC Capitol Region Transition Academy
- Farmington Valley Diagnostic Center
- CREC John J. Allison, Jr. Polaris Center
- CREC River Street Autism Program at Birken
- CREC River Street School
- Southern Transition Real-World and Independent Vocational Education (STRIVE)

# REGIONAL COLLABORATION AND PARTNERSHIPS

## State Agencies

CT Assistive Technology Project  
CT Board of Education and Services for the Blind  
CT Bureau of Rehabilitation Services  
CT Coalition for the Education of Deaf and Hard of Hearing Children  
CT Commission on the Arts  
CT Commission on Deaf and Hearing Impaired  
CT Commission on Women, Children and Seniors  
CT Cooperative Extension  
CT Departments of:  
Administrative Services; Children and Families; Corrections;  
Developmental Services; Economic and Community Development;  
Education; Energy & Environmental Protection; Health; Labor;  
Public Health and Addiction Services; Social Services; Support  
Services Division  
CT Development Authority  
CT Freedom of Information Commission  
CT Health and Educational Facilities Authority  
CT Husky Health Care  
CT Office of Early Childhood  
CT Technical Education and Career System

## Higher Education

Asnuntuck Community College  
Bay Path University  
Bureau of Voc-Tech Schools  
CT Adult Education Programs  
Central Connecticut State University  
Capital Community College  
Charter Oak College  
Goodwin College  
Eastern Connecticut State University  
The Lincoln College of New England's Dental Hygiene Program  
Manchester Community College  
Middlesex Community College  
New York University  
Office of Higher Education  
Quinnipiac University  
Sacred Heart University  
Southern Connecticut State University  
Springfield College  
Trinity College  
Tunxis Community College  
University of Connecticut  
University of Hartford  
University of New Haven  
University of Saint Joseph  
Wesleyan University  
Yale University

## Professional Associations

Accreditation Facilitation Project  
Adult Numeracy Network  
After School Network Alliance  
American Association of School Administrators  
American Institutes for Research (AIR)  
American Society of Training and Development  
Association of Education Service Agencies (AESAs)  
Association of Teachers of Math in Connecticut  
Association Montessori Internationale (AMI)  
Bridges Collaborative - The Century Foundation  
Commission on Adult Basic Education  
CT Academy of Educational Leaders  
CT Administrators of Programs for English Language Learners  
CT Association of Adult and Continuing Education  
CT Association of Boards of Education  
CT Association for Children With Learning Disabilities  
CT Association for the Education of Young Children  
CT Association of Nonprofits  
CT Association of Public School Superintendents  
CT Association of School Business Officials  
CT Association of School Personnel Administrators  
CT Association of Secondary Schools  
CT Business and Industry Association  
CT Child Care Training Academy  
CT Council of Administrators of Special Education  
CT Council on Developmental Disabilities  
CT Council of Leaders of Mathematics  
CT Education Association  
CT Parent Advocacy  
CT Principals' Academy  
CT Quality Council  
CT School Building and Grounds Association  
CT School Public Relations Association  
CT School Transportation Association  
CT Teachers of English to Speakers of Other Languages  
East Hartford CONNects  
Farmington Valley Retired Teachers Association  
Gay, Lesbian, and Straight Education Network (GLSEN)  
Guild of IB Schools Northeast (GIBS)  
Hartford Area Superintendents Association  
International Association of Psychosocial Rehabilitation Services  
Learning Forward CT  
Magnet Schools of America  
Microsoft  
National Commission on Adult Basic Education  
National Coalition for Literacy  
National and CT Associations for the Education of Young Children  
New England Parent Information Education  
Northeast Educational Research Association  
Prospanica  
Raising Readers Beginning with Books  
School Nutrition Association of CT  
University Center for Excellence in Developmental Disabilities

## Legislative

Advisory Committee on Intergovernmental Relations (ACIR)  
Connecticut General Assembly

## Local and Regional Agencies

African Caribbean American Parents of Children with Disabilities (AFCAMP)  
Capital Area Substance Abuse Council  
Capital Region Workforce Development Board  
Capitol Region Council of Governments  
Career Resources  
Catholic Family Services  
Celebration Foods  
Child Health and Development Institute of Connecticut (CHDI)  
CHR (Community Health Resources)  
Connecticut Association of Schools  
Connecticut Association of Supervision and Curriculum Development  
Connecticut Center For School Change  
Connecticut Historical Society  
Connecticut Parent Advocacy Center (CAPC)  
Connecticut Puerto Rican Forum  
Connecticut Women's Education and Legal Fund  
Co-Opportunity, Inc.  
EEsmarts/Eversource  
Foodshare  
Greater Hartford Arts Council  
Greater Hartford Legal Aid  
Greater Hartford Transit District  
Greater Hartford YMCA  
New Britain YMCA  
Hartford Area Child Care Collaborative  
Hartford Consortium for Higher Education  
Hartford Foundation for Public Giving  
Leadership Greater Hartford  
Manchester Historical Society  
MetroHartford Regional Economic Alliance Metropolitan  
District Commission  
Midstate Medical Center  
National Center for Family Literacy  
New England Assistive Technology  
New England Regional Literacy Resource Center  
Northeast and Islands  
Pitney Bowes Foundation  
Regional Laboratory for Educational Improvement  
of the Riverfront Recapture  
Riverfront Recapture  
Southend Institutions Neighborhood Alliance (SINA)  
State Education Resource Center  
The Workforce, Inc.  
United Illuminating  
United Way of Central and Northeastern Connecticut  
University of Connecticut Health Center  
Urban League of Greater Hartford  
VOCAL  
We Care Computers, LLC

## Hartford Agencies and Organizations

Compass Youth Collaborative  
City of Hartford  
Coalition to Strengthen Sheldon/Charter Oak Neighborhood  
Community Health Services  
Community Renewal Team  
CT Center for Nonviolence  
Harriet Beecher Stowe Center  
Hartford District Parole Office  
Hartford Hospital  
Hartford Multicultural Center  
Hartford Public Library  
Hartford Stage  
Institute of Living  
Mark Twain House and Museum  
Old State House  
St. Francis Hospital  
The Bushnell  
Trinity Health of New England

## Federal Agencies

Environmental Protection Agency  
National Aeronautics & Space Administration  
U.S. Department of Education  
U.S. Department of Housing & Urban Development

## Regional Educational Service Centers

CREC is one of six Regional Educational Service Centers (RESCs) in Connecticut. Membership in one RESC enables a district to access the programs and services from other RESCs if those services are not available within their region. CREC works with the following RESCs as an Alliance to provide services to virtually every public school district in Connecticut.



# Budget Statements

FISCAL YEAR ENDING  
JUNE 30, 2025

PROGRAM	AMOUNT
<b>General Fund Programs</b>	
Academy of Aerospace and Engineering .....	18,131,136
Academy of Aerospace and Engineering	
Elementary Magnet School.....	12,930,634
Academy of Science and Innovation.....	17,296,333
Ana Grace Academy of the Arts	
Elementary School.....	11,894,751
Ana Grace Academy of the Arts Middle School.....	8,951,290
Central Office Facility Cost Center .....	4,248,360
Communication Office .....	1,229,439
CREC Academy of Computer Science & Engineering HS.....	14,121,705
CREC Academy of Computer Science & Engineering Middle School MS.....	19,409,721
CREC Academy of International Studies (6-12) .....	16,625,062
CREC Academy of International Studies	
Elementary.....	12,082,858
CREC Preschool at Progress Drive .....	3,312,869
Discovery Academy .....	11,572,906
Executive Office.....	861,843
Farmington Valley Diagnostic Center.....	1,889,775
Glastonbury/East Hartford Magnet School .....	10,642,568
Grants Office.....	376,162
Greater Hartford Academy of the Arts (GHAA).....	18,500,334
Human Resources office .....	2,560,489
Integrated Program Models (IPM) .....	337,700
Learning Corridor Campus .....	5,757,160
Magnet School Cost Center.....	41,311,706
Montessori Magnet School.....	9,191,512
Museum Academy .....	10,617,626
Office of Finance and Operations.....	8,867,569
Polaris Center .....	6,854,005
Reggio Magnet School of the Arts .....	11,393,273
River Street School (RSS).....	42,916,880
School Transportation Management Services.....	21,000,000
Soundbridge.....	2,331,235
STRIVE .....	778,225
Student Services .....	591,395
Transportation Services .....	7,620,695
University of Hartford Magnet School (UHMS) .....	15,694,226
University Pathways .....	0
General Fund Subtotal .....	\$371,901,442

PROGRAM	AMOUNT
<b>Special Revenue Fund Programs</b>	
American Rescue Plan - Dual Credits .....	76,514
American Rescue Plan - Elementary and Secondary School Relief (ARP - ESSER) Grant .....	6,420,600
American Rescue Plan - Expand Support for LEAP.....	421,706
American Rescue Plan - High Dosage Tutoring.....	472,147
American Rescue Plan - Homeless .....	17,953
American Rescue Plan - Right to Read.....	a.
Capitol Region Choice Program .....	16,402,171
Community Education Services .....	1,118,960
Connecticut Technical High School System	
Related Services.....	6,018,992
CT Office of Early Childhood Education .....	4,283,235
CT Teacher Residency Program.....	2,177,991
Early Education.....	829,401
Early Intervention Birth to Three Services.....	2,121,655
Early/Head Start Program .....	13,966,760
Entitlement Grants .....	1,944,563
Impact Academy/Barr Foundation.....	a.
Learner Engagement & Attendance Program (LEAP) ..	724,873
Magnet Schools Assistance Program.....	3,840,496
Magnet Summer Program .....	100,000
Office of Early Childhood: Infant and Toddler Classrooms .....	828,281
Project Prevent .....	1,403,844
Regional Trauma Coordinators.....	500,000
Safer Communities - Stronger Connections.....	156,894
SDE Early Childhood Program .....	6,057,710
Sheff Technical Services Agreement.....	4,766,495
Statewide Family Engagement Center .....	1,297,896
STRIVE .....	758,070
Student Services .....	584,200
Summer Enrichment Program .....	2,847,116
Supplemental Services.....	830,251
Transportation Services .....	7,985,120
University of Hartford Magnet School (UHMS) .....	12,500,493
University Pathways .....	191,410
Wallace Foundation: Closing Opportunity	
Gaps for Adolescents.....	27,049
Youth Service Programs .....	940,795
Special Revenue Fund Subtotal	\$80,594,348

<b>Capital Projects Fund Programs</b>	
Ana Grace Academy of the Arts.....	600,000
Capital Projects Fund Subtotal .....	\$600,000

<b>Enterprise Fund Programs</b>	
CREC Resource Group .....	9,806,445
Montessori Training Center of New England .....	1,424,130
Regional Fingerprinting Services.....	132,515
Enterprise Fund Subtotal .....	\$11,363,090

<b>SUMMARY BY FUND TYPE</b>	
General Fund.....	350,003,620
Special Revenue Fund.....	88,772,784
Enterprise Fund .....	12,433,735

GRAND TOTAL WITHOUT CONSTRUCTION	\$371,901,442
----------------------------------	---------------

# Projected Budget Statements

FISCAL YEAR ENDING  
JUNE 30, 2026

PROGRAM	AMOUNT
<b>General Fund Programs</b>	
Academy of Aerospace and Engineering .....	20,171,400
Academy of Aerospace and Engineering	
Elementary Magnet School.....	13,733,039
Academy of Science and Innovation.....	18,499,002
Ana Grace Academy of the Arts	
Elementary School.....	11,990,626
Ana Grace Academy of the Arts Middle School.....	9,691,005
Central Office Facility Cost Center .....	6,711,985
Communication Office .....	1,325,347
CREC Academy of Computer Science & Engineering HS.....	15,136,508
CREC Academy of Computer Science & Engineering Middle School MS.....	16,307,275
CREC Academy of International Studies (6-12) .....	19,522,307
CREC Academy of International Studies	
Elementary.....	11,445,154
CREC Preschool at Progress Drive .....	3,507,503
Discovery Academy .....	12,966,993
Executive Office.....	878,221
Farmington Valley Diagnostic Center.....	1,909,730
Glastonbury/East Hartford Magnet School .....	11,166,469
Grants Office.....	279,351
Greater Hartford Academy of the Arts (GHAA).....	19,197,946
Human Resources office .....	2,596,371
Integrated Program Models (IPM) .....	262,485
Learning Corridor Campus .....	5,835,640
Magnet School Cost Center.....	11,988,664
Montessori Magnet School.....	9,675,962
Museum Academy .....	11,037,326
Office of Finance and Operations.....	9,318,168
Polaris Center .....	6,520,435
Reggio Magnet School of the Arts .....	12,222,082
River Street School (RSS).....	44,863,247
School Transportation Management Services.....	67,300,000
Soundbridge.....	2,267,260
STRIVE .....	758,070
Student Services .....	584,200
Transportation Services .....	7,985,120
University of Hartford Magnet School (UHMS) .....	12,500,493
University Pathways .....	191,410
General Fund Subtotal .....	\$400,346,794

PROGRAM	AMOUNT
<b>Special Revenue Fund Programs</b>	
Program.....	
Capitol Region Choice Program .....	1,383,000
Community Education Services .....	418,995
Connecticut Technical High School	
System Related Services.....	4,985,305
CT Office of Early Childhood Education .....	3,519,900
CT Teacher Residency Program.....	1,768,300
Early Education.....	829,401
Early Intervention Birth to Three Services.....	2,115,345
Early/Head Start Program .....	13,150,862
Learner Engagement & Attendance Program (LEAP) ..	661,225
Magnet Schools Assistance Program.....	3,248,183
Magnet Summer Program .....	1,299,031
Project Prevent .....	1,087,242
SDE Early Childhood Program .....	5,509,415
Sheff Technical Services Agreement.....	5,007,978
Statewide Family Engagement Center .....	997,199
Supplemental Services.....	418,490
Youth Service Programs .....	867,680
Special Revenue Fund Subtotal .....	\$47,267,551

<b>Capital Projects Fund Programs</b>	
Ana Grace Academy of the Arts, formerly Two Rivers Magnet High School .....	0
Capital Projects Fund Subtotal .....	\$0

<b>Enterprise Fund Programs</b>	
CREC Resource Group .....	8,170,330
Montessori Training Center of New England .....	1,452,455
Regional Fingerprinting Services.....	135,200
Enterprise Fund Subtotal .....	\$9,757,985

<b>SUMMARY BY FUND TYPE</b>	
General Fund.....	356,901,442
Special Revenue Fund.....	71,186,947
Enterprise Fund .....	11,363,090

GRAND TOTAL	\$439,451,479
-------------	---------------

Council Officers



**Tyron V. Harris**  
*Chair*  
East Hartford Public Schools



**Leonard Lockhart**  
*Vice Chair*  
Windsor Public Schools



**Meg Scata**  
*Secretary/Treasurer*  
Portland Public Schools

Council Representatives

- Avon – Chris Campbell
- Berlin – Tracy Sisti
- Bolton – Rhea Klein
- CABE – Patrice McCarthy
- Canton – Kimberly Sullivan
- East Granby – Bob Paskiewicz
- East Granby – Lynn Landolina
- East Granby – Ricky Bortz
- East Hartford – Tyron V. Harris (Chairperson)
- East Windsor – Elizabeth LeBorious
- Ellington – Miriam Underwood
- Enfield – Charlotte Riley
- Farmington – Andrea Sobinski
- Farmington – William Beckert
- Glastonbury – Julie Thompson
- Hartford – Stephen Wilson
- Hartford – Steven Tatum
- Manchester – Chris Pattacini
- New Britain – Joan Pina
- Newington – Amy Perrotti
- Plainville – Becky Tyrrell
- Portland – Meg Scata (Secretary/Treasurer)
- Rocky Hill – Jay Chhabra
- Simsbury – Lydia Tedone
- Somers – Carl Stebbins
- South Windsor – Mitchell Marks
- Southington – Bob Brown
- Suffield – Samuel Toskin
- Vernon – Karen Colt
- Wethersfield – Barbara (Bobbie) Hughes Granato
- Windsor – Davie Furie (Alternate)
- Windsor – Leonard Lockhart (Vice Chair)
- Windsor Locks – Dennis Gragnolati
- Windsor Locks – Patricia King
- (Student Liaison) – Ariellys Manzueta
- (Student Liaison) – Chanel Echvarria

	Avon	Berlin	Bloomfield	Bolton	Bristol	Canton	Cromwell	East Granby	East Hartford	East Windsor	Ellington	Enfield	Farmington	Glastonbury	Granby	Hartford	Hartland	Manchester	New Britain	New Hartford	Newington	Plainville	Portland	Region 10	Rocky Hill	Simsbury	Somers	Southington	South Windsor	Suffield	Vernon	West Hartford	Wethersfield	Windsor	Windsor Locks	Other		
ADMINISTRATIVE SERVICES																																						
Fingerprinting Services	•			•				•	•	•					•	•															•		•		•			
Cooperative Purchasing	•	•	•	•	•	•	•	•	•	•	•	•	•	•	•	•		•	•	•		•	•	•	•	•	•	•	•	•	•	•	•	•	•	•		
CT PRIME															•	•		•												•			•	•	•			
COMMUNITY EDUCATION																																						
Adult & Continuing Education					•				•				•	•	•	•		•	•		•	•			•				•		•	•	•	•	•			
CREC RESOURCE GROUP																																						
Assistive Technology Consortium					•							•															•											
CT Teacher Residency Program				•	•				•	•								•													•							
Councils	•	•	•	•	•	•	•	•	•	•	•	•	•	•	•	•	•	•	•	•	•	•	•	•	•	•	•	•	•	•	•	•	•	•	•	•		
Learner Engagement and Attendance Program (LEAP)									•							•		•	•																			
Professional Development	•	•	•	•	•	•	•	•	•	•	•	•	•	•	•	•	•	•	•	•	•	•	•	•	•	•	•	•	•	•	•	•	•	•	•	•		
Staff Brokering	•	•	•	•	•	•	•	•	•			•	•	•	•	•		•	•		•	•	•	•	•	•		•	•	•	•	•	•	•		•		
CREC Soundbridge				•	•	•	•	•	•	•	•	•		•	•	•		•			•	•	•		•	•			•	•		•	•	•	•	•		
Soundbridge Birth to Three	•	•							•			•				•	•	•					•			•			•			•	•			•		
Statewide Family Engagement Center (CT Family School Partnerships)				•		•						•			•						•												•					
CHOICE PROGRAMS																																						
Hartford Region Open Choice Program	•	•		•		•	•	•		•	•	•	•	•	•	•					•	•	•		•	•	•	•	•	•	•	•	•	•		•	•	
Magnet Schools	•	•	•	•	•	•	•	•	•	•	•	•	•	•	•	•	•	•	•	•	•	•	•	•	•	•	•	•	•	•	•	•	•	•	•	•	•	
STUDENT SERVICES																																						
CREC Birth to Three	•			•	•							•	•		•	•	•					•				•						•						
CREC Head Start			•	•					•					•		•		•	•		•	•	•		•								•	•	•	•		
CREC John J. Allison Jr. Polaris Center	•	•	•			•	•					•	•	•			•	•	•		•	•		•	•			•	•	•	•	•	•	•	•	•		
CREC River Street School	•	•	•		•	•	•	•	•		•	•	•	•	•	•		•	•		•			•	•			•	•	•	•	•	•	•	•	•		
Farmington Valley Diagnostic Center	•		•			•		•				•	•		•						•	•			•		•		•							•		
STRIVE Program																																				•		
OPERATIONS																																						
Regional Transportation	•	•	•	•	•	•	•	•	•	•	•	•	•	•	•	•	•	•	•	•	•	•	•	•	•	•	•	•	•	•	•	•	•	•	•	•	•	

● ● ●  
INNOVATION



INSPIRATION



INCLUSION



IMPACT





111 Charter Oak Ave., Hartford, CT 06106  
860-247-CREC | [www.crec.org](http://www.crec.org)