

2023-2024 ANNUAL REPORT



TABLE of Contents

4 Mission, Vision, Core Values, and Goals	26 CREC Foundation
4 Diversity, Equity, and Inclusion Statement	28 Individual Donors
5 Executive Director's Letter	30 Funding Agencies
6 Did You Know?	32 Regional Collaboration & Partnerships
7 How CREC Sets Priorities	34 Budget Statement
7 Actual Revenue	35 Projected Budget Statement
10 Innovation	36 Governance
14 Inspiration	37 Services Matrix
18 Inclusion	38 Organization Chart
22 Impact	

EXCELLENCE in EDUCATION





We are  CREC Excellence in Education





OUR MISSION

Equity, excellence, and success for all through high-quality educational services.

OUR VISION

To become our member districts' primary resource to facilitate collaborative efforts that create equitable and sustainable educational opportunities, assist in maximizing district and regional resources, and advance successful educational practices for all learners at all ages.

OUR CORE VALUES

-  EXPECT EXCELLENCE
-  ACT WITH COURAGE
-  DEMAND EQUITY
-  EMBRACE COLLABORATION

DIVERSITY, EQUITY, & INCLUSION STATEMENT

CREC is an intentionally diverse social justice organization whose members work to acknowledge, respect, and empathize with people of all different identifiers, such as race, socioeconomic status, gender identity and expression, education, age, ability, ethnicity, culture, sexual orientation, language, nationality, and religion. We commit to affirm and honor the lived experiences of others, to willingly challenge inherited beliefs and ideologies, and consequently learn, grow, and serve.

LAND ACKNOWLEDGMENT

In partnership with the Akomawt Educational Initiative, CREC established a Land Acknowledgment Statement in 2022 to recognize Native and Indigenous resilience and strength. CREC employees are encouraged to read this statement before any event held in CREC's spaces:

We would like to begin by acknowledging that the land on which we gather is the ancestral territory of the Tunxis, Sicoag, Pocumtuc, Wangunk, Poquonook, Podunk, Quinnipiac, Massacoe and Hammonasset Peoples who have stewarded this land throughout the generations. We also acknowledge the five state & federally recognized tribal nations that exist in Connecticut today: the Mashantucket Pequot, Mohegan, Golden Hill Paugussett, Eastern Pequot, and Schaghticoke people. We support their sovereignty as tribal nations now and into the future.

EXECUTIVE DIRECTOR'S LETTER



Dear Friends,

The 2023-24 year has been one of profound transition and opportunity for CREC. Change is never easy, but it is through these moments of growth that we find our greatest potential to thrive. This year, as we navigate leadership transitions and celebrate the incredible contributions of our team, I am reminded of CREC's resilience and its unwavering commitment to its mission of fostering equity, innovation, and excellence in education.

One of the most significant transitions was the retirement of Superintendent Tim Sullivan in June, following a remarkable 35-year career in education, including seven years leading CREC Magnet Schools. Tim's dedication and leadership helped shape the successes we now celebrate. Stepping into his role is Dr. Sasha Douglas, whose journey with CREC began in 2011 and has been marked by innovation, compassion, and a deep commitment to equity. As our new Superintendent of Magnet Schools, Dr. Douglas's leadership promises a bright future for our schools and students.

We also welcomed Desi Nesmith as Assistant Executive Director in April, filling a role that had been unappointed for several years. Desi's extensive experience at the local and state levels brings invaluable insight and expertise to CREC. His vision for advancing educational equity aligns seamlessly with our core values, and I am excited about the opportunities his leadership will bring.

At the same time, we prepare to bid farewell to Deputy Executive Director Sandy Cruz-Serrano, who will retire in December. Sandy's impact on CREC is immeasurable. As I said

at Convocation this year, Sandy is, in my opinion, the most consequential senior leader in CREC's history. From her instrumental role in expanding CREC's schools and programs to her strategic leadership in stabilizing and strengthening the organization, Sandy's legacy will shape CREC for decades to come. I am grateful not only for her unparalleled contributions to CREC but also for her friendship and guidance. In her absence, Chief Human Resource Officer Carlos Figueroa will assume her duties as our new Chief Administrative Officer, ensuring continuity and excellence in our operations.

Amidst these transitions, CREC continues to achieve remarkable success: and our accomplishments reflect the strength of our community and the unwavering dedication of CREC's staff. Each individual's passion and commitment are the foundation of our success.

As we look to the future, I am filled with optimism. With new leadership, steadfast core values, and a shared vision for equity and excellence, CREC is poised for continued success. Thank you for your trust, support, and partnership in this journey. Together, we will embrace change, seize new opportunities, and continue to thrive.

Sincerely,

Greg J. Florio, Ed.D.

DID YOU KNOW?



8,838

students received a robust theme-based education in our 16 Magnet Schools and 2 Magnet Programs

2,284

students participated in the Hartford Region Open Choice Program, attending school in 27 towns



Our dedicated staff of

2,284

full-time employees is the heartbeat of the organization

134

Professional learning workshops spanning topics like equity, curriculum, and Social Emotional Learning, enriched the skills of

3,254

participants

CREC vehicles safely transported students to and from school

11,145,734

miles total –the equivalent of over 26 trips to the moon and back



2,396

students received special education services in CREC's 7 Student Services Programs



The CREC Region's **34** Member Districts represent our council and the majority of our schools and programs' sending towns

- | | |
|---------------|------------------------------------|
| Avon | New Britain |
| Berlin | Newington |
| Bloomfield | Plainville |
| Bolton | Portland |
| Bristol | Region 10 (Burlington & Harwinton) |
| Canton | Rocky Hill |
| Cromwell | Simsbury |
| East Granby | Somers |
| East Hartford | Southington |
| East Windsor | South Windsor |
| Ellington | Suffield |
| Enfield | Vernon |
| Farmington | West Hartford |
| Glastonbury | Wethersfield |
| Granby | Windsor |
| Hartford | Windsor Locks |
| Hartland | |
| Manchester | |

How CREC Sets Priorities

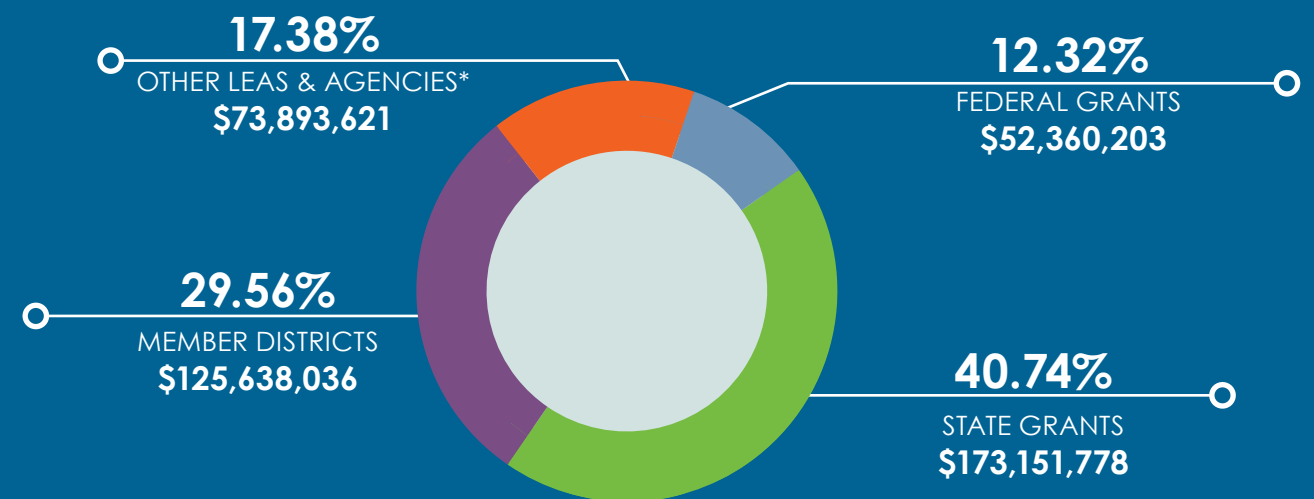
CREC works closely with many partners to ensure that our agency's priorities and our programs and services respond to the growing and ever-changing needs of our varied clientele. CREC works diligently to listen to and probe our partners and clients for understanding and perspective. During 2020-2021, CREC continued to rely on feedback from:

- Advisory committees that help set program-specific priorities with direct service programs
- CREC's Board of Directors and the CREC Council, representing Board of Education members from urban, suburban, and rural districts, meet monthly to discuss problems affecting education in our region and encourage CREC to pursue an active role in providing high-quality, cost-effective solutions
- Ongoing meetings held with the Hartford Area Superintendents' Association, curriculum directors, special education directors, personnel directors, Connecticut Association of School Business Officials, Connecticut Association of Boards of Education, and meetings with the State's Commissioner of Education
- Needs assessments and planning documents from state agencies as they reflect the needs of the capital region

- The strategic planning committees of organizations, primarily the Connecticut State Department of Education and the Capitol Region Partnership and its member agencies
- Regular meetings with other regional service agencies to assess needs and discuss the ways those needs can be met through cooperative efforts
- All internal divisions and programs through an ongoing, comprehensive, and collaborative strategic planning process that evaluates the changes and growth in demand for services
- Stakeholder surveys and program evaluations that gather information about the targeted needs of our clients, the accessibility of our programs, and the quality of our services

Information from these and other sources is analyzed and evaluated by CREC's leadership. CREC's cross-divisional internal staff leadership team studies emerging needs and examines the interdepartmental strengths which could be matched to meet those needs. The results are shared with the team of CREC program managers. Strategies are then devised for how to implement the identified services. Feedback, flexibility, and responsiveness are key components to our success.

Actual Revenue
\$425,043,638



*Includes sales outside CREC districts, sales to individuals, contracts to state agencies, and other sales
Source: Capitol Region Education Council Business Services Department
Note: Total Revenues are Governmental Funds - no 700, no 800, no transfers - Exhibit IV of CAFR

INNOVATION



INSPIRATION

INCLUSION



IMPACT

INNOVATION

In March, the CREC Academy of Science and Innovation Ravens Boys Basketball Team won the CIAC Division IV State Championship at Mohegan Sun Arena. It was the program's second State Title in their only nine years of existence. Senior Amari Cruz, the team's first ever 1000-point scorer, won the tournament's most outstanding player.



INNOVATION



CREC Magnet Schools seniors boasted a

92.1%

four-year graduation rate, 4% better than the state of Connecticut overall.

1 CREC ACADEMY OF COMPUTER SCIENCE AND ENGINEERING HIGH SCHOOL hosted a special coding camp for middleshoolers.

2 CREC DISCOVERY ACADEMY hosted their annual fall Discovery Night.

3 CREC HEAD START hosted state and federal legislators for a ribbon-cutting ceremony at their new facility in the Swift Factory in Hartford's North End.

4 GLASTONBURY-EAST HARTFORD MAGNET SCHOOL students were treated to a Recycled Percussion performance.

5 THE CONNECTICUT TEACHER RESIDENCY PROGRAM honored retiring Superintendent Tim Sullivan at their annual conference for his work to create the program in 2019.

6 CREC MUSEUM ACADEMY hosted their annual exhibition night.

7 CREC ANA GRACE ACADEMY OF THE ARTS Middle School students performed "Annie" for their first ever musical.

8 CREC HUMAN RESOURCES ran a special cohort of their Internal Leadership Development Program for CREC paraeducators and associate instructors.

9 CREC RESOURCE GROUP'S Technology Education Specialist Ratosha McBride gives students at CREC Academy of Aerospace and Engineering Elementary School a lesson in Digital Literacy.

INSPIRATION

In October, CREC Montessori Magnet School cut the ribbon on their newly-designed library and dedicated it to late U.S. Congressman John Lewis. Lewis was a longtime supporter of CREC's mission, champion of social justice, and friend of Montessori Magnet teachers Joe DePasqua and Heather Sutkowski.



INSPIRATION



1. CREC MAGNET SCHOOL'S FAMILY AND COMMUNITY ENGAGEMENT TEAM launched their Fatherhood Initiative, under the leadership of Joseph Johnson Jr. from CREC Academy of Aerospace and Engineering Elementary.

2. CREC ANA GRACE ACADEMY OF THE ARTS graduate Alex Inyatkin was invited to audition for "Garden of Dreams" at Madison Square Garden in NYC and was filmed for their program at the school.

3. CREC EMPLOYEES held the big flag during the anthem at an outing at the Hartford Yard Goats.

4. CREC UNIVERSITY OF HARTFORD MAGNET SCHOOL'S Cheer and Step Team posed for a photo after they performed their second annual pep rally.

5. CREC SOUNDBRIDGE continues to lead the region in educational audiology services and auditory/oral and aural habilitation, with expertise provided by audiologists like Stephanie Noble.

6. CREC ACADEMY OF COMPUTER SCIENCE AND ENGINEERING MIDDLE SCHOOL gets a special performance and demonstration from the Harlem Globetrotters.

7. CREC COMMUNITY EDUCATION SERVICES graduated many more adult learners this year, including this group of future Medical Office Assistants.

8. CREC ANA GRACE ACADEMY OF THE ARTS kicked off the school year in style and even had special visit from the State Department of Education.

750

of our youngest children were evaluated for services by CREC's Birth to Three department.



1,247

Educators participated in CREC Resource Group's free professional learning Councils focusing on curriculum, early childhood, English language learners, equity, literacy, library media, math, science, social studies, and Social Emotional Learning.

INCLUSION

This year, CREC launched the Women's Circle Employee Network Group! They capped off Women's HERstory month in March with a tremendously successful purse and toiletry drive for women in our community.



INCLUSION



1. HARTFORD REGION OPEN CHOICE PROGRAM
families enjoy a fall outing with pumpkin picking at the CT Trolley Museum..

2. CREC MAGNET SCHOOLS
hosted their third annual Racial Justice Action Showcase at the Theater of the Performing Arts

3. CREC'S JUNTOS AVANZAMOS EMPLOYEE NETWORK GROUP
celebrated the conclusion of Hispanic Heritage Month with an all-CREC dominoes tournament.

4. GLASTONBURY-EAST HARTFORD MAGNET SCHOOL
welcomes families to their annual STEM Night.

5. CREC ACADEMY OF INTERNATIONAL STUDIES
performs for their Black History Month Celebration.

6. CREC ACADEMY OF SCIENCE AND INNOVATION junior James Crocker, of Granby, hosted a letter writing campaign at the Capitol, in partnership with Lt. Gov. Bysiewicz, to combat chronic loneliness.

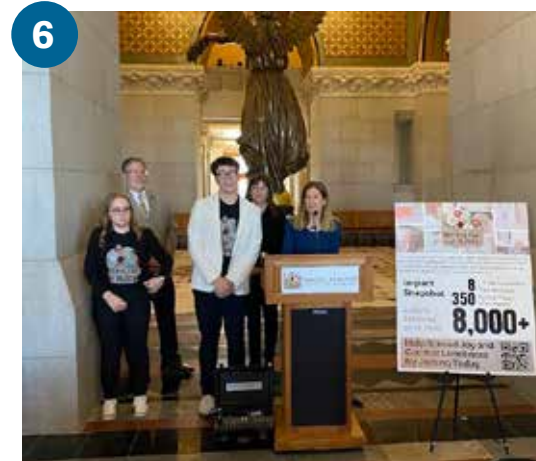
7. CREC MONTESSORI MAGNET SCHOOL
celebrates their annual Heritage night.

8. CREC STRIVE transition students get together for Family Night.

9. THE CONNECTICUT TEACHER RESIDENCY PROGRAM
celebrated the program's fifth anniversary.

10. OVER 100 CREC EMPLOYEES
celebrated 10 years with CREC at the annual Longevity Reception.

11. COMMUNITY EDUCATION SERVICES employees celebrate another successful year of graduating adult English learners, vocational training students, and GED preppers.



The 9th annual Back to School Block Party was another smashing success providing resources and backpacks to over 1500 students.



IMPACT

IMPACT



1



2



3



4



5

1500
backpacks full of school supplies were handed to over 700 families at our 2024 Back to School Block Party



6



7



8



9



10

- 1. CREC ATHLETICS** honored their many Hartford Yard Goats' Citizen Athletes of the Week at a game in May.
- 2. THE 2024 CREC ANNUAL MEETING** celebrated CREC's year of accomplishments and handed out scholarships and awards to many students and community partners.
- 3. CREC HEAD START'S** new location at Roger Wolcott School in Windsor was highlighted on News8's "What's Right With Schools"
- 4. HARTFORD REGION OPEN CHOICE PROGRAM** students celebrate the end of the year with a hands-on crafting event.
- 5. CREC GREATER HARTFORD ACADEMY OF THE ARTS HIGH SCHOOL** UConn Early College Experience Students hosted two events focused on Mental Health and Opioid Addiction Awareness. CT AG William Tong spoke at the Opioid Addiction event and was presented with a gift from the students.
- 6. CREC ACADEMY OF SCIENCE AND INNOVATION'S** National Honor Society students pose for a photo.
- 7. CREC MAGNET SCHOOLS STUDENT SENATE** gets a lesson in circle-keeping from Student Affairs Coordinator Dana Turnquest
- 8. CREC COMMUNITY EDUCATION SERVICES** celebrates their first graduating cohort of Central Sterile Processing Technicians in partnership with CT State Community College Manchester
- 9. CREC VOLUNTEERS** work on a Holcomb Street house for ReBuilding Together Hartford.
- 10. CREC RESOURCE GROUP, RIVER STREET SCHOOL, AND TRANSPORTATION** make connections at a regional career fair at Dunkin Park.

CREC FOUNDATION

This year, the CREC Foundation proudly introduced the Ana Grace Love Wins Scholarship, a new scholarship fund created in partnership with the Márquez-Greene family to honor the memory of Ana Grace Márquez-Greene, one of the students tragically lost in the Sandy Hook massacre on December 14, 2012.

The scholarship was established to commemorate what would have been Ana's college years, as she would have graduated high school in 2024. The four-year award, totaling \$25,000 (\$6,250 annually), celebrates the perseverance, hard work, and community spirit that prevail even in the face of unimaginable tragedy. Open to graduates of CREC Magnet Schools or the Hartford Region Open Choice Program with an interest in the arts, the inaugural scholarship was awarded to Raeah Thorington, a CREC Academy of International Studies graduate now attending Wheaton College and majoring in Visual Arts.

Nelba Márquez-Greene and Jimmy Greene, both CREC alumni and former staff members, spoke to the significance of this partnership:

“As graduates of CREC schools, we are enthusiastic champions of the specialized study, academic rigor, and enhanced learning opportunities that come from being with others outside your own circle,” said Nelba Márquez-Greene. “We believe this is exactly what the world needs right now.”

This year's scholarship reflects the enduring commitment of the Márquez-Greene family and the CREC Foundation to supporting students, celebrating the arts, and honoring Ana Grace's legacy of love and creativity.

Beyond the scholarship, the CREC Foundation continued its tradition of support through its signature events and programs:

- **9th Annual CREC Foundation Golf Invitational and Scholarship Dinner:** Once again, this event brought together the community to support scholarships for students who have overcome adversity. Renewable scholarships averaging \$6,000 annually were awarded to five students. Title Sponsors, including The Sullivan Investment Group and Transamerica, helped make the event a success.
- **Innovation Grants:** The Foundation funded creative projects, including supporting the third annual CREC Pride Prom for LGBTQIA+ students in grades 9-12. With 187 students attending, this event provided a safe, affirming space to celebrate diversity and inclusion.
- **CREC Cares:** Through this employee benevolence program, over 100 families received emergency assistance with housing, clothing, funeral expenses, and food. This vital support underscores the Foundation's commitment to addressing urgent community needs.
- **With funding support from the Hartford Foundation for Public Giving's Latino Endowment Fund, a mentoring program—Empowering Latinas Leadership Alliance (ELLA)—was formed to support chronically absent ninth-grade Latina students at Greater Hartford Academy of the Arts and the Academy of Computer Science & Engineering. The group's goal is to develop leadership skills in 20 Latina students, enhancing their success in school and the community.**

As we reflect on the Foundation's impact, it is clear that its work embodies CREC's core values of equity, innovation, and community. Through initiatives like the Ana Grace Love Wins Scholarship, the Foundation continues to honor the legacies of those who inspire us while fostering opportunities for future generations.



OVER
\$57,000

were awarded through the CREC Foundation and the Hartford Region Open Choice Program to students who attended high school in the region to help achieve college goals



CREC FOUNDATION

Individual Donors

Reginald and Dee Acloque
 Kim Adams-Nora
 Karen Adrian
 Olga Agosto
 Agramonte Denise
 Whitney Agyeman
 Lauren Akerlind
 Logan Aldave
 Walter Aldave
 Gwen Aldridge
 Christopher Alexander
 Daniel Ali
 Amato Aliberti
 Lauren Allen-Jones
 Rema Alleyne-Manga
 Erin Andrus
 Dynaza Anthony
 Karen Arborio
 Anissa Arloro
 Simona Arloro
 Aura Alvarado
 Amanda Ambrosio
 Erin Andrus
 Daniel Arnold
 Moriha Aronowitz
 Suzanne Artis
 Susan Ashe
 Sarah Bajger
 Tm Barber
 Elizabeth Banning
 Jay Barbuto
 Jean Barresi
 Gerald Barrett
 David Barrieau
 Una Barry
 Marissa Bascom
 Hannah Bassett
 Christopher Bate
 Dayna Beal
 Diana Beardsley
 Cliona Beaulieu
 Hanifa Begic
 Janice Bell
 Camille Bent
 Lesley Bentil
 Elaine Bergeron
 Delixandra Bermudez-Mendez
 Cathy Berni
 Kevin Berstene
 Frank Berzanskis
 Bhanmatie Bhoj
 Amanda Bibisi
 Katherine Black
 Suzanne Black
 Gregg Blackstone
 Kelene Bolden
 Stephen Bordeau
 Ankarah Boughton
 Arthur and Kathleen Bourgault
 Callie Bostic-Gardner
 Caleb Bostic-Gardner
 Steve Bowen
 Elaina Brachman
 Billie Jo Bradley
 Claude Bradley
 Alison Burdick Reichard
 Ericka Byrd
 Thomas Brodnitzki
 Darnell Brown

Alysa Burke-Worthy
 Shelby Caballero
 David Cafe
 Desmond Caldwell
 Nicholas Campagna
 Christopher Campbell
 Robbin Cappa
 Toussaint Careathers
 Hannah Carrafiello
 Tanya Carrafiello
 James R and Nancy R Carroll
 Audrey Carlson
 Jillian Carroza
 Greg Carter
 Jonathan Carvajal
 Edward Casares
 Gemma Casciano
 Sara Castle
 Ana Castro
 Nicole Castro
 Pierrette Centeno
 Gina Chace
 Nicholas Chanese
 Janine Chapdelaine
 Dorene Chin
 Joy Chlus
 Julie Christianson
 Violet Chun
 Alison Cianciolo
 Jerome Clapis
 Michael Clapis
 Kelly-Ann Clark
 Andrea Clarke
 Glorimar Claudio
 Mary Lou Cobb
 Carol and Bernard Cohen
 Hyla Cohen
 Paul Colbenson
 Desiree Coleman
 Jeffrey Collazo
 Sean Collins
 Storm Cooper
 Tuesday L. Cooper
 Charles Copeland
 Tia Correnti
 Jose Cotto
 Lucius Couloute
 Andra and Michael Coyle
 Norlean Cozzolino
 Mellissa Craig
 Eric Crawford
 Felicia Croal
 Lishamarie Cruz
 Sandra Cruz-Serrano
 Evans Jacobs, Esq and Lillian Cruz
 Christopher Curtis
 Diane Daddabbo
 Katie Dagostino
 Traci D'Amico
 Khalilah Dann
 Kimberly Davis
 Francesca Day
 Heather Day
 Bradley J Dea
 Nicholas and Karen Defelice
 Flor De Hoyos
 Bryan De La Cruz
 Evelyn De La Cruz
 Gabriella DeJesus Brown

Joel Dejong
 Anaida Delgado
 Patricia DelMonte
 Antillana del Valle
 Maureen DePierro
 Dorothy Devine
 Maris Dillman
 Joy DiMaria
 Sharon DiSilvestro
 Jessica Dolan
 Eva Doll
 Bruce and Allison Douglas
 Sasha Douglas
 Aleta Dubecky
 Christopher Dubois
 Patrick W and Joan S Duffy
 Tatyana Duncan
 Charles Dye
 Jo Ann Peters and Craig W Edmondson
 Ann Edmund
 Alexis Egan
 Aaron Ellerbe
 Millissa Ellis
 Kathleen Ellis
 Lisa Ellison
 John and Diane Engle
 Jeannette Estrada
 Susannah Everett
 Renita Ezell
 Andre Ezell
 Adebanke Faloye
 Michelle Farr
 Erin Farrell
 Kyle Ferguson
 Elizabeth Fernandez
 Ruchira Fernando
 Annabella Figliomeni
 Carlos Figueroa
 Sarah Fitzsimons
 Susan Flanagan
 Greg Florio
 Benjamin Foran
 Christopher Fox
 Shannon Francis
 Destiny Fraser
 Suzanne Freeman
 Joseph Fromme
 Robin Frost
 Annette Fulk
 Danette Gee
 Suzanne Ghiloni
 Brianna Gibs
 Patrick Gill
 Tanya Gilman
 Robert Gold
 Erica Gomez
 Marie B and Dorothy Gondek
 Elsie Gonzalez
 Anthony Gordon
 Melanie Gordon
 Thoma sand Maryanne Gosselin
 Britney Grant
 Brian Greenleaf
 Anna Gregoire
 Grzegorz Grochowski
 Germaine Gumbs-James
 Marlene Guzman

Kim Guzzo
 Vincent Haas
 Gretchen Hall
 Elliott Hambrook
 John Hambrook
 Donna Hamre
 Michele Han
 Lisbeth Harrison
 Cara Hart
 Natalie and Dennis Hartunian
 Rich Haskell
 Carolyn Havrda
 Patrick Heick
 Lisa Hellen
 Mark Hellen
 Johnny Lugo
 Linda Helmke
 Nilda Hernandez
 Yesenia Hernandez
 Carmelo Magro
 Denise Mah
 Kelly Maio
 Latoya Malcolm
 Juana Maldonado
 Alison Malone
 Dimpy Malvania
 Penny Manion
 Gary M Marineau Jr
 Eric Markow
 Laura Marshall
 Eric Martin
 Michael Martin
 Patricia Martineck
 Laura Martinez
 Stephen Massenber
 David Matheson
 Roslyn Matos Monserrat
 John and Sharon Mattas
 Nora Matthews
 Jay Maule
 Albina Mayar
 W Wilson Keithline and Beth Mazadoorian
 Ashley Mazzoli
 Heather McBride
 Stacey McCorison
 Kelly McDermott
 Paula McDonald
 Laura and Nicholas McGuffie
 Jo McHugh
 Lawrence and Patricia McHugh
 Suzanne McKinstry
 Malik McKnight
 Sheila and William McPhee
 Kimberly Mearman
 Sonia Medina
 Alejandra Menegol
 Jessica Metcalf
 Jessica Michaud
 Santana Miller
 Sarah Miller
 Ada Miranda
 Lisa Moland
 Margaret Mongillo
 Kimberly Monroe
 HJH Living Trust
 William Montanile
 Jean Moore
 Karen Morris
 Karen C Morris
 Michelle Moss
 Lori Mullooly

Alanna Levesque
 Jay Lawlor
 David Lazicki
 Jeff LeMay
 Jessica Leon
 Gerard Leonard
 Alanna Levesque
 Edna Levy
 Elsinore Lewis
 Florice Lewis
 Lynn Lewis
 Renee Lewis-Lockhart
 Niti Lindsay
 Dana Little
 Patricia and Michael Livingstone
 Carrie Lombardo
 Daysi Lora-Perez
 Dinora Lopez
 Marlene Lovanio
 Johnny Lugo
 Antonella Maccarone
 Carmelo Magro
 Denise Mah
 Kelly Maio
 Latoya Malcolm
 Juana Maldonado
 Alison Malone
 Dimpy Malvania
 Penny Manion
 Gary M Marineau Jr
 Eric Markow
 Laura Marshall
 Eric Martin
 Michael Martin
 Patricia Martineck
 Laura Martinez
 Stephen Massenber
 David Matheson
 Roslyn Matos Monserrat
 John and Sharon Mattas
 Nora Matthews
 Jay Maule
 Albina Mayar
 W Wilson Keithline and Beth Mazadoorian
 Ashley Mazzoli
 Heather McBride
 Stacey McCorison
 Kelly McDermott
 Paula McDonald
 Laura and Nicholas McGuffie
 Jo McHugh
 Lawrence and Patricia McHugh
 Suzanne McKinstry
 Malik McKnight
 Sheila and William McPhee
 Kimberly Mearman
 Sonia Medina
 Alejandra Menegol
 Jessica Metcalf
 Jessica Michaud
 Santana Miller
 Sarah Miller
 Ada Miranda
 Lisa Moland
 Margaret Mongillo
 Kimberly Monroe
 HJH Living Trust
 William Montanile
 Jean Moore
 Karen Morris
 Karen C Morris
 Michelle Moss
 Lori Mullooly

MaryKate Mullooly
 Margaret Murphy
 Katherine Myers
 Barbie Nadal-Cristofaro
 Antonio Napoleone
 Ruth Napoleone
 Nicole Natale
 Katherine Nazario
 Tim Ne
 Yadira Negron
 Kimberly Neild
 Dana Nennering
 Desi Nesmith
 Margaret Tonon and Warren Neyenhuis
 Kayleen Nintean
 Sarah-Anne Nicholas
 Celia Noe
 Kristen Nolan
 Vivian Novo-MacDonald
 Lorraine Ocasio
 John O Connor
 Patricia Odom
 Tomiko Odorczuk
 Kara Ogonji
 Lauren O'Leary
 Myrakle Otero
 Michele Ouellette
 Sandra Ouellette
 Isabelle Owens
 Robert Owens
 Miguel Pabon
 Roselyn Pace
 Sixmaritt Pagan-Pena
 Kristen Palmer
 Akanksha Pandey
 Sara Paolino
 Justin Paradis
 Stephen and Cynthia Parsons
 Ezzio and Deborah Partesano
 Niralee Patel
 Denise Patterson
 Erin Patterson
 Kathryn and Michael Patterson
 Asheanti Payne
 Darren Pearson
 Amy Pecora
 Eddie Perez
 Danielle Perry
 Elaine Pertillar
 Kristen Pinsonneault
 Laura Pirruccello
 Brittany Plummer
 Malissa Postell
 Lisa Potter
 Kennan Poulakos
 John Pratt
 Claudia Provenzano
 Diane Provenzano
 Katherine Raftery
 Gomathi Ramachandran
 Athania Ramos
 Lindsey Ramos
 Kelsie Ramos
 Kathy Randall
 Brooke Rau
 Elizabeth Reed-Swale
 Linda L Regulbuto
 Chelsea Reis
 Deborah Richards
 Edward Richters
 Karrie Rinaldi
 Kristen Rinas
 Gladys Rivera

Michelle Rivera
 Ivette Rizza
 Laura Rizzo
 Glynis Roberts
 Kimberly Roberts
 Chelsea Roberts
 Sherry Robin
 Patrick Robitaille
 Curtis Rodriguez-Porter
 Garry Roman
 Sandra Roman
 Angela Romprey
 Maria Rosa
 Claudette Rose
 Tina Ruggerio
 Christine Ruman
 Chantel Russell
 Nicholas Russillo
 Angiolino Russo
 Shelly Rustek-Esten
 Bo Ryan
 George Sailor
 Pamela Sailor
 Ylka Sakaj
 Migdalia Salas
 CharJam Sales
 Kelly Sanchez
 Mikaela Sasada
 Deborah Scarborough
 Louis and Susan Scianna
 Susan Schlank
 Cecilia Schlossberg
 Christopher Scoppetta
 Shandra Scott-Brown
 Sarah Seals
 Jennifer Senick
 Grace Serrano
 Richard Serrano Sr.
 Danah Serrano-Baez
 Brianne Shea
 Kim Shea
 Michael and Betsey Sheehan
 Jennifer Shenouda
 Crystal Siemienkowicz
 Benjamin Simon
 Brandi Simonsen
 Alicia Simpson
 Violet Sims
 Jada Singleton
 Jennifer Skitromo
 Myriam Slattery
 Andrea Slifka
 Kerrian Smith
 Sarhanna Smith
 Susan A. Smith
 Tyra Smith
 Masoumeh Soleimani Amirsheka
 Robert Sommo
 Diane Provenzano
 Eileen Spalla
 Kurt Stanco
 Stacy Stefanowich
 Sara Steinberg Forman
 Matthew Steinkraus
 Joyce Sternberg
 David Stewart
 Olivia Strelevitz
 Nakisha Strickland
 John Sullivan
 Maxine Sullivan
 Thomas Sullivan
 Timothy Sullivan, Jr.
 Jessica Sullivan
 David Sutherland

Aiyana Sykes
 Diane Takata
 Heather Tartaglia
 Ratosha Terry
 Laurelle Texidor
 Mohamed Jamaludden
 Thirapusa Mohaideen
 Rudolph Thomas
 Merissa Thompson
 Mason Thrall
 Jennifer Tierney
 Trisila Tirado
 Louise Tolbert
 Jennifer Tompkins
 Melissa Torres
 Jennifer Traks
 Rebecca Trapp
 Marita and Neil Tremaglio
 Michael Trujillo
 Zaharias Tsahalis
 Angela and George Tunstall
 John Tusch
 Gidgette Ursone
 Kelvin Valencia
 Rebekah Van Anden
 Wanda Vargas
 Samantha Vaughan Williams
 Edward Velazquez
 Spiros Vellios
 Linda Villa
 Sarah Vocca
 Jeffrey Walker
 Christopher Wardrop
 Rebecca Warkoski
 Shanta Warren
 Maryam Wassil-Wardak
 David E and Margaret Scott Watson
 Colleen Webber
 Joel D and Meghan I Weisel
 Victoria Whaley
 Jessica White
 Akilah Williams
 Angelene Williams
 Marvin B and Emily Williams
 John M Willis
 Jaye Wilson
 Nattaneal Wilson
 Kimberly Winfield
 Terry Wilson
 Elizabeth Windsor-Post
 Jill Wnuk
 Gail Wolfe
 Darlene Wolliston
 Darlene Wong
 Andrea Wright
 Debra Wright
 Shirley G Wright
 David Wu
 Anthony Yacavone
 Carolyn Yakaitis
 Mary Jean Yencho
 Audrey Yuen
 Jill Zaino
 Janet Zarchen
 Mary Zeman
 Diane Zybrands

2023-2024 CREC Funding Agencies

Adella & Alfred Giller Charitable Trust
Amazon Smiles
American Online Giving Foundation
Amplify / LEGO
Ana Grace Project, Inc.
Aquila's Nest Vineyards LLC
Barr Foundation
Blackbaud Giving Fund The
Branford Dental Care
Brown Rudnick Charitable Foundation
Building Confident Learners LLC
C&C Janitorial Supplies, Inc.
California Casualty Management Co
Charities Aid Foundation America
Church of the Good Shepherd, Rector's
Discretionary Fund
Community Foundation of Tampa Bay, Inc.
Connecticut Academy of Science and
Engineering

Connecticut Dance Academy LLC
Connecticut Education Association
Connecticut Humanities Council, Inc.
Customink LLC
Delta-T Group Hartford, Inc.
Dollar General Literacy Foundation
DWC Home & Property Improvement LLC
Earthlight Technologies LLC
Fidelity Charitable
Gordon Bonetti Florist, Inc.
GotSneakers, LLC
Hartford Athletic LLC
Hartford Foundation for Public Giving
Hartford Lodge No 19 BPO Elks
Hear Here Hartford
Ion Bank Foundation
Jones Lang LaSalle America Inc.
Juniper Homecare, LLC
Latino Way, Inc.

Madhu Reddy Realty LLC The
Massucci & Associates, LLC
Natchaug Hospital
National Center for Teacher Residencies BEI
Owens, Renz & Lee Company, Inc.
Peter Carmen CT TRP
Peter R. Marsh Foundation
Progressive Insurance
Rainbow Graphics
Raytheon Technologies Charity Custodial
Roberts Foundation
RTCX Company, Inc.
Ryan T. Lee Memorial Foundation, Inc.
Sullivan Investment Group
Town of South Windsor The
Transamerica Retirement Solutions LLC
Unfold the Soul
William Casper Graustein Memorial
Z Rink Sports Foundation, Inc.



IN MEMORIAM Tim Nee 1957-2024

CREC remembers Tim Nee, lifelong educator and Montessorian, who passed away unexpectedly this past May. Tim improved the lives of countless students, educators, families, and colleagues. He served the CREC community in many roles, as Assistant Executive Director, founding principal of CREC Montessori Magnet School, and founding Managing Director of CREC's Montessori Training Center Northeast. We celebrate Tim's legacy as a champion of the rights of children as well as an unstoppable leader in the expansion of public Montessori education throughout CT and globally. The impact Tim has made is a testimony to his commitment, passion, and dedication to his unwavering vision of a better world.

To donate to Montessori Training Center Northeast's Tim Nee Scholarship Fund, and contribute to a legacy of excellence and accessibility in Montessori education, please visit www.crec.org/c/timnee.



REGIONAL COLLABORATION AND PARTNERSHIPS

State Agencies

CT Assistive Technology Project
 CT Board of Education and Services for the Blind
 CT Bureau of Rehabilitation Services
 CT Coalition for the Education of Deaf and Hard of Hearing Children
 CT Commission on the Arts
 CT Commission on Deaf and Hearing Impaired
 CT Commission on Women, Children and Seniors
 CT Cooperative Extension
 CT Departments of:
 Administrative Services; Children and Families; Corrections;
 Developmental Services; Economic and Community Development;
 Education; Energy & Environmental Protection; Health; Labor;
 Public Health and Addiction Services; Social Services; Support
 Services Division
 CT Development Authority
 CT Freedom of Information Commission
 CT Health and Educational Facilities Authority
 CT Husky Health Care
 CT Office of Early Childhood
 CT Technical Education and Career System

Higher Education

Asnuntuck Community College
 Bay Path University
 Bureau of Voc-Tech Schools
 CT Adult Education Programs
 Central Connecticut State University
 Capital Community College
 Charter Oak College
 Goodwin College
 Eastern Connecticut State University
 The Lincoln College of New England's Dental Hygiene Program
 Manchester Community College
 Middlesex Community College
 New York University
 Office of Higher Education
 Quinnipiac University
 Sacred Heart University
 Southern Connecticut State University
 Springfield College
 Trinity College
 Tunxis Community College
 University of Connecticut
 University of Hartford
 University of New Haven
 University of Saint Joseph
 Wesleyan University
 Yale University

Professional Associations

Accreditation Facilitation Project
 Adult Numeracy Network
 After School Network Alliance
 American Association of School Administrators
 American Institutes for Research (AIR)
 American Society of Training and Development
 Association of Education Service Agencies (AESAs)
 Association of Teachers of Math in Connecticut
 Association Montessori Internationale (AMI)
 Bridges Collaborative - The Century Foundation
 Commission on Adult Basic Education
 CT Academy of Educational Leaders
 CT Administrators of Programs for English Language Learners
 CT Association of Adult and Continuing Education
 CT Association of Boards of Education
 CT Association for Children With Learning Disabilities
 CT Association for the Education of Young Children
 CT Association of Nonprofits
 CT Association of Public School Superintendents
 CT Association of School Business Officials
 CT Association of School Personnel Administrators
 CT Association of Secondary Schools
 CT Business and Industry Association
 CT Child Care Training Academy
 CT Council of Administrators of Special Education
 CT Council on Developmental Disabilities
 CT Council of Leaders of Mathematics
 CT Education Association
 CT Parent Advocacy
 CT Principals' Academy
 CT Quality Council
 CT School Building and Grounds Association
 CT School Public Relations Association
 CT School Transportation Association
 CT Teachers of English to Speakers of Other Languages
 East Hartford CONNects
 Farmington Valley Retired Teachers Association
 Gay, Lesbian, and Straight Education Network (GLSEN)
 Guild of IB Schools Northeast (GIBS)
 Hartford Area Superintendents Association
 International Association of Psychosocial Rehabilitation Services
 Learning Forward CT
 Magnet Schools of America
 Microsoft
 National Commission on Adult Basic Education
 National Coalition for Literacy
 National and CT Associations for the Education of Young Children
 New England Parent Information Education
 Northeast Educational Research Association
 Prospanica
 Raising Readers Beginning with Books
 School Nutrition Association of CT
 University Center for Excellence in Developmental Disabilities

Legislative

Advisory Committee on Intergovernmental Relations (ACIR)
 Connecticut General Assembly

Local and Regional Agencies

African Caribbean American Parents of Children with Disabilities (AFCAMP)
 Capital Area Substance Abuse Council
 Capital Region Workforce Development Board
 Capitol Region Council of Governments
 Career Resources
 Catholic Family Services
 Celebration Foods
 Child Health and Development Institute of Connecticut (CHDI)
 CHR (Community Health Resources)
 Connecticut Association of Schools
 Connecticut Association of Supervision and Curriculum Development
 Connecticut Center For School Change
 Connecticut Historical Society
 Connecticut Parent Advocacy Center (CAPC)
 Connecticut Puerto Rican Forum
 Connecticut Women's Education and Legal Fund
 Co-Opportunity, Inc.
 EESmarts/Eversource
 Foodshare
 Greater Hartford Arts Council
 Greater Hartford Legal Aid
 Greater Hartford Transit District
 Greater Hartford YMCA
 New Britain YMCA
 Hartford Area Child Care Collaborative
 Hartford Consortium for Higher Education
 Hartford Foundation for Public Giving
 Leadership Greater Hartford
 Manchester Historical Society
 MetroHartford Regional Economic Alliance Metropolitan
 District Commission
 Midstate Medical Center
 National Center for Family Literacy
 New England Assistive Technology
 New England Regional Literacy Resource Center
 Northeast and Islands
 Pitney Bowes Foundation
 Regional Laboratory for Educational Improvement
 of the Riverfront Recapture
 Riverfront Recapture
 Southend Institutions Neighborhood Alliance (SINA)
 State Education Resource Center
 The Workforce, Inc.
 United Illuminating
 United Way of Central and Northeastern Connecticut
 University of Connecticut Health Center
 Urban League of Greater Hartford
 VOCAL
 We Care Computers, LLC

Hartford Agencies and Organizations

Compass Youth Collaborative
 City of Hartford
 Coalition to Strengthen Sheldon/Charter Oak Neighborhood
 Community Health Services
 Community Renewal Team
 CT Center for Nonviolence
 Harriet Beecher Stowe Center
 Hartford District Parole Office
 Hartford Hospital
 Hartford Multicultural Center
 Hartford Public Library
 Hartford Stage
 Institute of Living
 Mark Twain House and Museum
 Old State House
 St. Francis Hospital
 The Bushnell
 Trinity Health of New England

Federal Agencies

Environmental Protection Agency
 National Aeronautics & Space Administration
 U.S. Department of Education
 U.S. Department of Housing & Urban Development

Regional Educational Service Centers

CREC is one of six Regional Educational Service Centers (RESCs) in Connecticut. Membership in one RESC enables a district to access the programs and services from other RESCs if those services are not available within their region. CREC works with the following RESCs as an Alliance to provide services to virtually every public school district in Connecticut.



Budget Statements

FISCAL YEAR ENDING
JUNE 30, 2024

PROGRAM	AMOUNT	PROGRAM	AMOUNT
General Fund Programs		Special Revenue Fund Programs	
Academy of Aerospace and Engineering	16,975,665	American Rescue Plan - Dual Credits	90,000
Academy of Aerospace and Engineering		American Rescue Plan - Elementary and	
Elementary Magnet School.....	11,404,690	Secondary School Relief (ARP - ESSER) Grant	14,928,000
Academy of Science and Innovation.....	16,754,744	American Rescue Plan - Expand Support for LEAP....	305,660
Ana Grace Academy of the Arts Elementary School	10,635,540	American Rescue Plan - High Dosage Tutoring	-
Ana Grace Academy of the Arts Middle School.....	8,104,858	American Rescue Plan - Homeless	67,476
Central Office Facility Cost Center	11,304,580	American Rescue Plan - Right to Read.....	380,000
Communication Office	1,160,350	Capitol Region Choice Program	16,088,480
CREC Academy of Computer Science &		Community Education Services	1,045,070
Engineering HS.....	13,084,944	Connecticut Technical High School System	
CREC Academy of Computer Science &		Related Services.....	5,992,337
Engineering Middle School MS	16,366,455	CT Office of Early Childhood Education	3,166,595
CREC Academy of International Studies (6-12)	16,079,146	CT Teacher Residency Program.....	2,922,547
CREC Academy of International Studies		Early Education.....	570,401
Elementary.....	9,729,854	Early Intervention Birth to Three Services.....	1,865,920
CREC Preschool at Progress Drive.....	3,106,589	Early/Head Start Program	14,249,099
Discovery Academy	10,345,571	Entitlement Grants.....	2,003,367
Executive Office.....	\$582,957	Impact Academy/Barr Foundation.....	345,632
Farmington Valley Diagnostic Center.....	1,623,412	Learner Engagement & Attendance Program (LEAP) 1,147,473	
Glastonbury/East Hartford Magnet School	9,639,563	Magnet Schools Assistance Program.....	3,587,741
Grants Office.....	370,158	Office of Early Childhood: Infant and	
Greater Hartford Academy of the Arts (GHAA).....	17,401,351	Toddler Classrooms	1,254,725
Human Resources office	2,072,191	Project Prevent	1,684,704
Integrated Program Models (IPM)	315,500	Regional Trauma Coordinators.....	1,200,000
Learning Corridor Campus	5,571,725	Safer Communities - Stronger Connections	-
Magnet School Cost Center.....	37,149,877	SDE Early Childhood Program	6,666,435
Montessori Magnet School.....	8,608,255	Sheff Technical Services Agreement.....	4,714,222
Museum Academy	9,883,862	Statewide Family Engagement Center	2,010,055
Office of Finance and Operations.....	6,239,081	Summer Enrichment Program	266,114
Polaris Center.....	6,227,595	Supplemental Services.....	950,553
Reggio Magnet School of the Arts	10,376,096	Wallace Foundation: Closing Opportunity	
River Street School (RSS).....	42,778,830	Gaps for Adolescents.....	55,000
School Transportation Management Services.....	20,700,000	Youth Service Programs.....	1,215,178
Soundbridge.....	2,386,795	Special Revenue Fund Subtotal	\$88,772,784
STRIVE	597,089		
Student Services	574,430	Capital Projects Fund Programs	
Transportation Services	7,349,300	Ana Grace Academy of the Arts.....	600,000
University of Hartford Magnet School (UHMS)	14,502,567	Capital Projects Fund Subtotal	\$600,000
General Fund Subtotal	\$350,003,620		
		Enterprise Fund Programs	
		CREC Resource Group	10,769,610
		Montessori Training Center of New England	1,536,925
		Regional Fingerprinting Services.....	127,200
		Enterprise Fund Subtotal	\$12,433,735
		SUMMARY BY FUND TYPE	
		General Fund.....	350,003,620
		Special Revenue Fund.....	88,772,784
		Enterprise Fund	12,433,735
		GRAND TOTAL WITHOUT CONSTRUCTION	\$451,210,139

Projected Budget Statements

FISCAL YEAR ENDING
JUNE 30, 2025

PROGRAM	AMOUNT	PROGRAM	AMOUNT
General Fund Programs		Special Revenue Fund Programs	
Academy of Aerospace and Engineering	17,781,136	American Rescue Plan - Dual Credits	76,514
Academy of Aerospace and Engineering		American Rescue Plan - Elementary and Secondary School Relief (ARP - ESSER)	
Elementary Magnet School.....	12,680,634	Grant	6,520,600
Academy of Science and Innovation.....	17,196,333	American Rescue Plan - Expand Support for LEAP....	421,706
Ana Grace Academy of the Arts Elementary School	11,344,751	American Rescue Plan - High Dosage Tutoring.....	472,147
Ana Grace Academy of the Arts Middle School.....	8,451,290	American Rescue Plan - Homeless	17,953
Central Office Facility Cost Center	2,248,360	American Rescue Plan - Right to Read	-
Communication Office	1,166,439	Capitol Region Choice Program	16,402,171
CREC Academy of Computer Science &		Community Education Services	1,118,960
Engineering HS.....	13,621,705	Connecticut Technical High School System Related Services	3,718,992
CREC Academy of Computer Science &		CT Office of Early Childhood Education	3,483,235
Engineering Middle School MS	18,959,721	CT Teacher Residency Program.....	2,177,991
CREC Academy of International Studies (6-12)	16,375,062	Early Education.....	570,401
CREC Academy of International Studies		Early Intervention Birth to Three Services.....	1,921,655
Elementary.....	10,782,858	Early/Head Start Program	10,017,590
CREC Preschool at Progress Drive	3,312,869	Entitlement Grants	1,944,563
Discovery Academy	10,972,906	Impact Academy/Barr Foundation...	-
Executive Office.....	\$861,843	Learner Engagement & Attendance Program (LEAP) .	724,873
Farmington Valley Diagnostic Center.....	1,764,775	Magnet Schools Assistance Program.....	3,128,952
Glastonbury/East Hartford Magnet School	10,092,568	Office of Early Childhood: Infant and	
Grants Office.....	376,162	Toddler Classrooms	828,281
Greater Hartford Academy of the Arts (GHAA).....	17,975,334	Project Prevent	\$1,403,844
Human Resources office	2,460,189	Regional Trauma Coordinators.....	500,000
Integrated Program Models (IPM)	337,700	Safer Communities - Stronger Connections.....	156,894
Learning Corridor Campus	5,757,160	SDE Early Childhood Program	5,627,110
Magnet School Cost Center.....	41,311,706	Sheff Technical Services Agreement.....	4,703,552
Montessori Magnet School.....	8,891,512	Statewide Family Engagement Center	969,867
Museum Academy	9,992,626	Summer Enrichment Program	2,733,886
Office of Finance and Operations.....	7,780,869	Supplemental Services.....	683,366
Polaris Center	5,854,005	Wallace Foundation: Closing Opportunity	
Reggio Magnet School of the Arts	10,943,273	Gaps for Adolescents.....	27,049
River Street School (RSS).....	39,716,880	Youth Service Programs	834,795
School Transportation Management Services.....	21,000,000	Special Revenue Fund Subtotal	\$71,186,947
Soundbridge.....	2,331,235		
STRIVE	722,225	Capital Projects Fund Programs	
Student Services	522,395	Ana Grace Academy of the Arts,	
Transportation Services	7,620,695	formerly Two Rivers Magnet High School	0
University of Hartford Magnet School (UHMS)	15,694,226	Capital Projects Fund Subtotal	\$0
General Fund Subtotal	\$356,901,442		
		Enterprise Fund Programs	
		CREC Resource Group	9,806,445
		Montessori Training Center of New England	1,424,130
		Regional Fingerprinting Services.....	132,515
		Enterprise Fund Subtotal	\$11,363,090
		SUMMARY BY FUND TYPE	
		General Fund.....	356,901,442
		Special Revenue Fund.....	71,186,947
		Enterprise Fund	11,363,090
		GRAND TOTAL	\$439,451,479

Council Officers



Tyron V. Harris
Chair
 East Hartford Public Schools



Leonard Lockhart
Vice Chair
 Windsor Public Schools



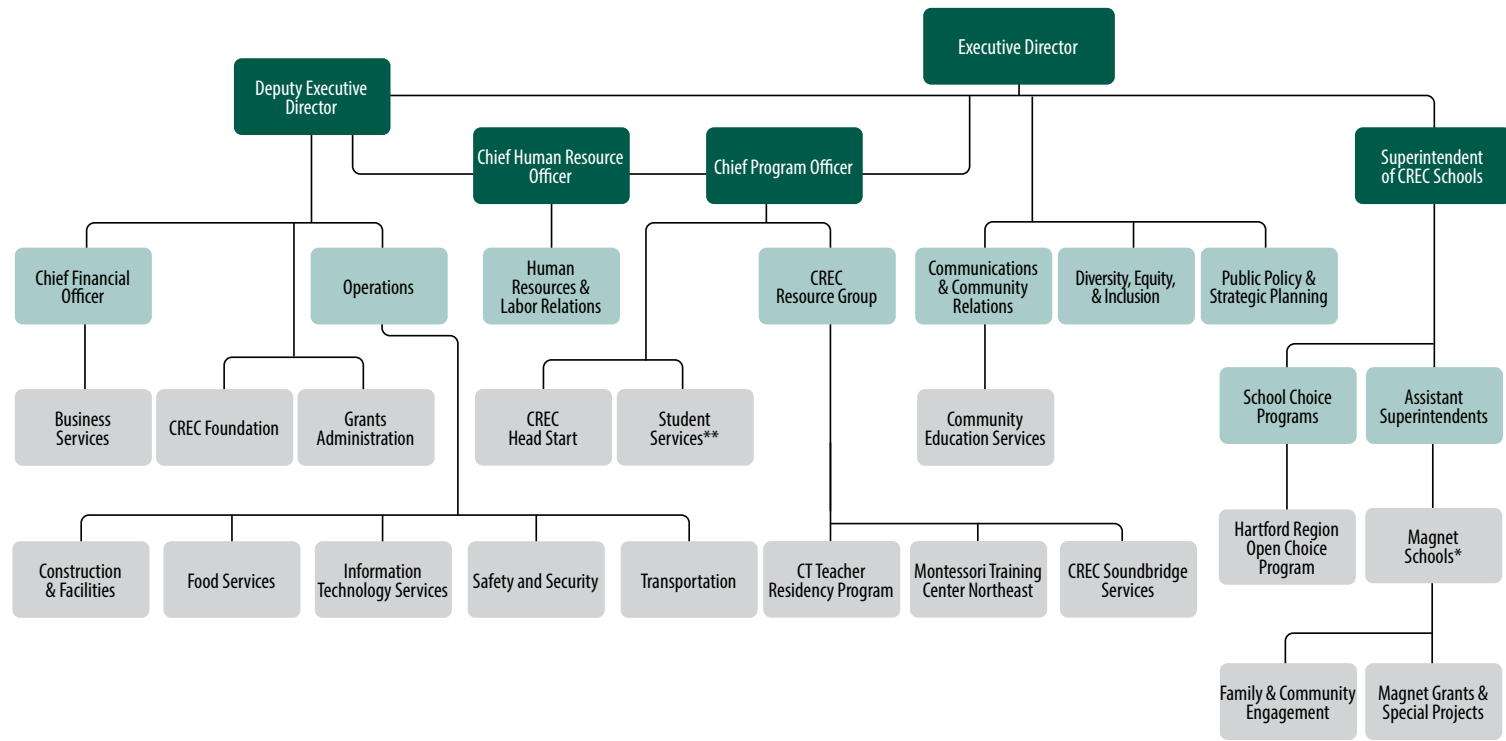
Meg Scata
Secretary/Treasurer
 Portland Public Schools

Council Representatives

- Berlin - Tracy Sisti
- Bolton - Rhea Klein
- Bolton - Sue Pike
- CABE - Patrice McCarthy
- Canton - Louis Daniels
- Cromwell - Celina Kelleher
- East Granby - Lynn Landolina
- East Granby - Ricky Bortz
- East Windsor - Francis Neill
- East Windsor - Kate Carey-Trull
- Ellington - Miriam Underwood
- Enfield - Charlotte Riley
- Farmington - Elizabeth Fitzsimmons
- Farmington - Ellen Siuta
- Glastonbury - Julie Thompson
- Granby - Kristina Gilton
- Hartford - Philip Rigueur
- Manchester - Chris Pattacini
- New Britain - Joan Pina
- New Britain - Merrill Gay
- Newington - Bruce Fletcher
- Newington - Sam Sharma
- Plainville - Becky Tyrrell
- Simsbury - Lydia Tedone
- Somers - Carl Stebbins
- Somers - Chris Thiessing
- South Windsor - Mitchell Marks
- South Windsor (Alt) - Craig Zimmerman
- Southington - Robert Brown
- Suffield - Maureen Sattan
- Vernon - Deborah Rodriguez
- Wethersfield - Bobbie Hughes-Granato
- Windsor - Davie Furie
- Windsor Locks - Dennis Gagnolati
- Windsor Locks - Patricia King

SERVICES
Matrix

	Avon	Berlin	Bloomfield	Bolton	Bristol	Canton	Cromwell	East Granby	East Hartford	East Windsor	Ellington	Enfield	Farmington	Glastonbury	Granby	Hartford	Hartland	Manchester	New Britain	New Hartford	Newington	Plainville	Portland	Region 10	Rocky Hill	Simsbury	Somers	Southington	South Windsor	Suffield	Vernon	West Hartford	Wethersfield	Windsor	Windsor Locks	Other	
ADMINISTRATIVE SERVICES																																					
Fingerprinting Services		
COMMUNITY EDUCATION																																					
Adult & Continuing Education					
CREC RESOURCE GROUP																																					
Cooperative Purchasing	
CT Family School Partnerships							.					.			.																						
CT PRIME														
CT Teacher Residency Program								
Curriculum Councils	
Increasing Educator Diversity	
Learner Engagement and Attendance Program (LEAP)								.							.	.																					
Professional Development
Staff Brokering
CREC Soundbridge
Soundbridge Birth to Three	
CHOICE PROGRAMS																																					
Hartford Region Open Choice Program
Magnet Schools
STUDENT SERVICES																																					
CREC Birth to Three	
CREC Head Start			
CREC John J. Allison Jr. Polaris Center	
CREC River Street School
Farmington Valley Diagnostic Center	
STRIVE Program																																			.		
OPERATIONS																																					
Regional Transportation



***16 Magnet Schools and 2 Programs**

- CREC Academy of Aerospace and Engineering (6-12)
 - CREC Academy of Aerospace and Engineering Elementary School (PreK-5)
 - CREC Academy of Computer Science and Engineering (9-12)
 - CREC Academy of Computer Science and Engineering Middle School (6-8)
 - CREC Academy of International Studies (6-12)
 - CREC Academy of International Studies Elementary School (PreK-5)
 - CREC Ana Grace Academy of the Arts (PreK-8)
 - CREC Discovery Academy (PreK-5)
 - Glastonbury-East Hartford Magnet School (PreK-5)
 - CREC Greater Hartford Academy of the Arts Full Day (9-12)
 - CREC Montessori Magnet School (PreK-6)
 - CREC Museum Academy (PreK-5)
 - CREC Preschool at Progress Drive (PreK 3&4)
 - CREC Reggio Magnet School of the Arts (PreK-5)
 - CREC University of Hartford Magnet School (PreK-5)
 - CREC Academy of Science and Innovation (6-12)
- PROGRAMS ————
- CREC Greater Hartford Academy of the Arts Half-Day (9-12)
 - CREC Impact Academy (9-12)

****Student Services Programs**

- CREC Birth to Three
- CREC Capitol Region Transition Academy
- Farmington Valley Diagnostic Center
- CREC John J. Allison, Jr. Polaris Center
- CREC River Street Autism Program at Birken
- CREC River Street School
- Southern Transition Real-World and Independent Vocational Education (STRIVE)

CREC Stakeholders

- Executive Leadership Team (ELT)
- Departments with members of the Leadership Team
- Departments





111 Charter Oak Ave., Hartford, CT 06106
860-247-CREC | www.crec.org