



[2022 ANNUAL 2023 REPORT



 **CREC**
Excellence in Education

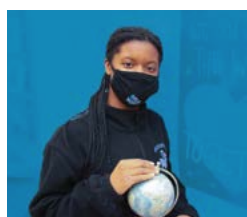


TABLE of Contents

4 Mission, Vision, Core Values, and Goals	26 CREC Foundation
4 Diversity, Equity, and Inclusion Statement	28 Individual Donors
5 Executive Director's Letter	29 Funding Agencies
6 Did You Know?	31 Organization Chart
7 How CREC Sets Priorities	32 Regional Collaboration & Partnerships
7 Actual Revenue	34 Budget Statement
10 Schools	35 Projected Budget Statement
14 Programs	36 Governance
18 People	37 Services Matrix
22 Community	

Excellence in EDUCATION





We are  CREC Excellence in Education





OUR MISSION

Equity, excellence, and success for all through high-quality educational services.

OUR VISION

To become our member districts' primary resource to facilitate collaborative efforts that create equitable and sustainable educational opportunities, assist in maximizing district and regional resources, and advance successful educational practices for all learners at all ages.

OUR CORE VALUES

-  EXPECT EXCELLENCE
-  ACT WITH COURAGE
-  DEMAND EQUITY
-  EMBRACE COLLABORATION

DIVERSITY, EQUITY, & INCLUSION STATEMENT

CREC is an intentionally diverse social justice organization whose members work to acknowledge, respect, and empathize with people of all different identifiers, such as race, socioeconomic status, gender identity and expression, education, age, ability, ethnicity, culture, sexual orientation, language, nationality, and religion. We commit to affirm and honor the lived experiences of others, to willingly challenge inherited beliefs and ideologies, and consequently learn, grow, and serve.

LAND ACKNOWLEDGMENT

In partnership with the Akomawt Educational Initiative, CREC established a Land Acknowledgment Statement in 2022 to recognize Native and Indigenous resilience and strength. CREC employees are encouraged to read this statement before any event held in CREC's spaces:

We would like to begin by acknowledging that the land on which we gather is the ancestral territory of the Tunxis, Sicoag, Pocumtuc, Wangunk, Poquonook, Podunk, Quinnipiac, Massacoe and Hammonasset Peoples who have stewarded this land throughout the generations. We also acknowledge the five state & federally recognized tribal nations that exist in Connecticut today: the Mashantucket Pequot, Mohegan, Golden Hill Paugussett, Eastern Pequot, and Schaghticoke people. We support their sovereignty as tribal nations now and into the future.

EXECUTIVE DIRECTOR'S Letter



Dear Friends,

As I write this opening letter, I find myself compelled to reflect on the journey we have traversed together. The words etched on my desk's chalkboard (pictured below) speak volumes about the spirit that defines our organization – a spirit not merely tethered to the notion of sustainability but one that boldly champions “thriveability.”

In the spring, as I walked the fairway in a rare golf outing, a fellow player shared the profound impact CREC's Birth-to-Three program had on his grandchild. It was a testament to our organization's resilience, determination, and unwavering commitment to thriving, not merely surviving. This story encapsulates the essence of our thriveability, our collective refusal to yield to the challenges presented by an ever-changing landscape.

In the face of unprecedented challenges, we didn't just sustain; we thrived. Our commitment to Birth-to-Three services, despite financial uncertainties, has resulted in a thriving program that is now adequately funded. Our journey is marked by triumphs –

the increase in black and brown teachers certified by the Connecticut Teacher Residency Program, the success of the LEAP initiative in combating chronic absenteeism, and the expansion of our early childhood programs, to name a few.



I am immensely proud of our social justice mission, realizing tangible outcomes in the form of improved academic growth, especially in our magnet schools. As the state experienced an overall decline, our schools demonstrated resilience, returning to pre-pandemic levels and even surpassing them in certain metrics.

These achievements are a testament to the collective power of our organization. It is not just about enduring challenges; it is about embracing thriveability as a guiding principle. We chose not only to weather the storm but to emerge stronger and more vibrant than ever before.

I have encouraged every CREC employee to carry this spirit of thriveability with them. Each person plays a pivotal role in shaping the lives of the students and families we serve. Their dedication, passion, and commitment to making a difference are the bedrock of our success. I heartily thank them for embracing thriveability, for bringing joy and purpose to their work, and for their unwavering dedication to our mission. Together, we'll continue to thrive, create, and inspire in the year ahead.

Sincerely,

Greg J. Florio, Ed.D.

DID YOU KNOW?



8,838

students received a robust theme-based education in our 16 Magnet Schools and 2 Magnet Programs

2,284

students participated in the Hartford Region Open Choice Program, attending school in 27 towns



Our dedicated staff of

2,162

full-time employees is the heartbeat of the organization

237

Professional learning workshops spanning topics like equity, curriculum, and Social Emotional Learning, enriched the skills of

4,169

participants

CREC vehicles safely transported students to and from school

12,663,682

miles total –the equivalent of over 26 trips to the moon and back



2,569

students received special education services in CREC's 7 Student Services Programs



The CREC Region's **35** Member Districts represent our council and the majority of our schools and programs' sending towns

Avon	New Britain
Berlin	New Hartford
Bloomfield	Newington
Bolton	Plainville
Bristol	Portland
Canton	Region 10 (Burlington & Harwinton)
Cromwell	Rocky Hill
East Granby	Simsbury
East Hartford	Somers
East Windsor	Southington
Ellington	South Windsor
Enfield	Suffield
Farmington	Vernon
Glastonbury	West Hartford
Granby	Wethersfield
Hartford	Windsor
Hartland	Windsor Locks
Manchester	

How CREC Sets Priorities

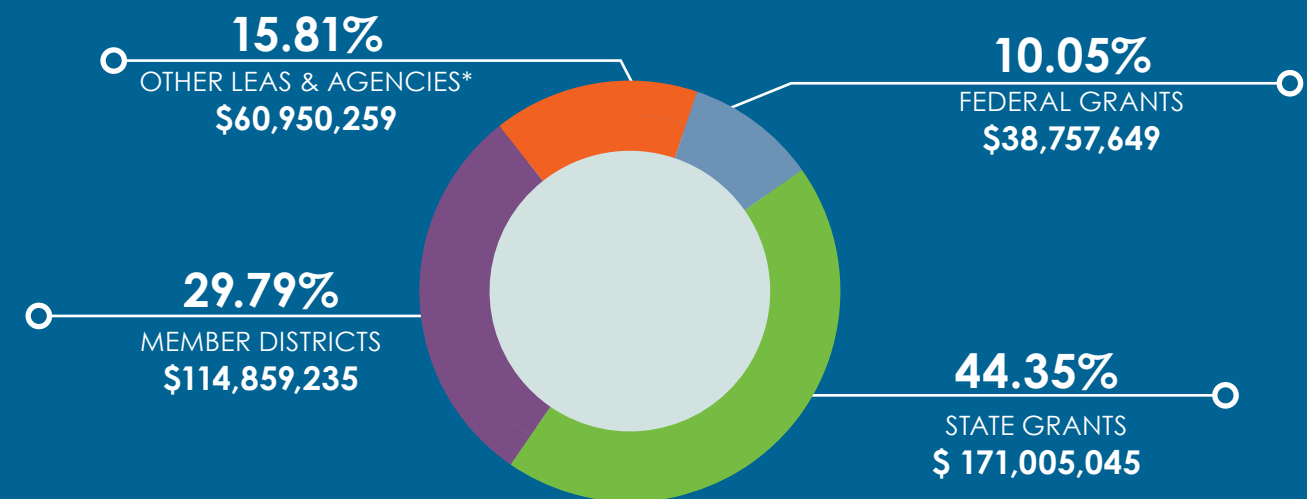
CREC works closely with many partners to ensure that our agency's priorities and our programs and services respond to the growing and ever-changing needs of our varied clientele. CREC works diligently to listen to and probe our partners and clients for understanding and perspective. During 2020-2021, CREC continued to rely on feedback from:

- Advisory committees that help set program-specific priorities with direct service programs
- CREC's Board of Directors and the CREC Council, representing Board of Education members from urban, suburban, and rural districts, meet monthly to discuss problems affecting education in our region and encourage CREC to pursue an active role in providing high-quality, cost-effective solutions
- Ongoing meetings held with the Hartford Area Superintendents' Association, curriculum directors, special education directors, personnel directors, Connecticut Association of School Business Officials, Connecticut Association of Boards of Education, and meetings with the State's Commissioner of Education
- Needs assessments and planning documents from state agencies as they reflect the needs of the capital region

- The strategic planning committees of organizations, primarily the Connecticut State Department of Education and the Capitol Region Partnership and its member agencies
- Regular meetings with other regional service agencies to assess needs and discuss the ways those needs can be met through cooperative efforts
- All internal divisions and programs through an ongoing, comprehensive, and collaborative strategic planning process that evaluates the changes and growth in demand for services
- Stakeholder surveys and program evaluations that gather information about the targeted needs of our clients, the accessibility of our programs, and the quality of our services

Information from these and other sources is analyzed and evaluated by CREC's leadership. CREC's cross-divisional internal staff leadership team studies emerging needs and examines the interdepartmental strengths which could be matched to meet those needs. The results are shared with the team of CREC program managers. Strategies are then devised for how to implement the identified services. Feedback, flexibility, and responsiveness are key components to our success.

Actual Revenue
\$385,572,188



*Includes sales outside CREC districts, sales to individuals, contracts to state agencies, and other sales
Source: Capitol Region Education Council Business Services Department
Note: Total Revenues are Governmental Funds - no 700, no 800, no transfers - Exhibit IV of CAFR

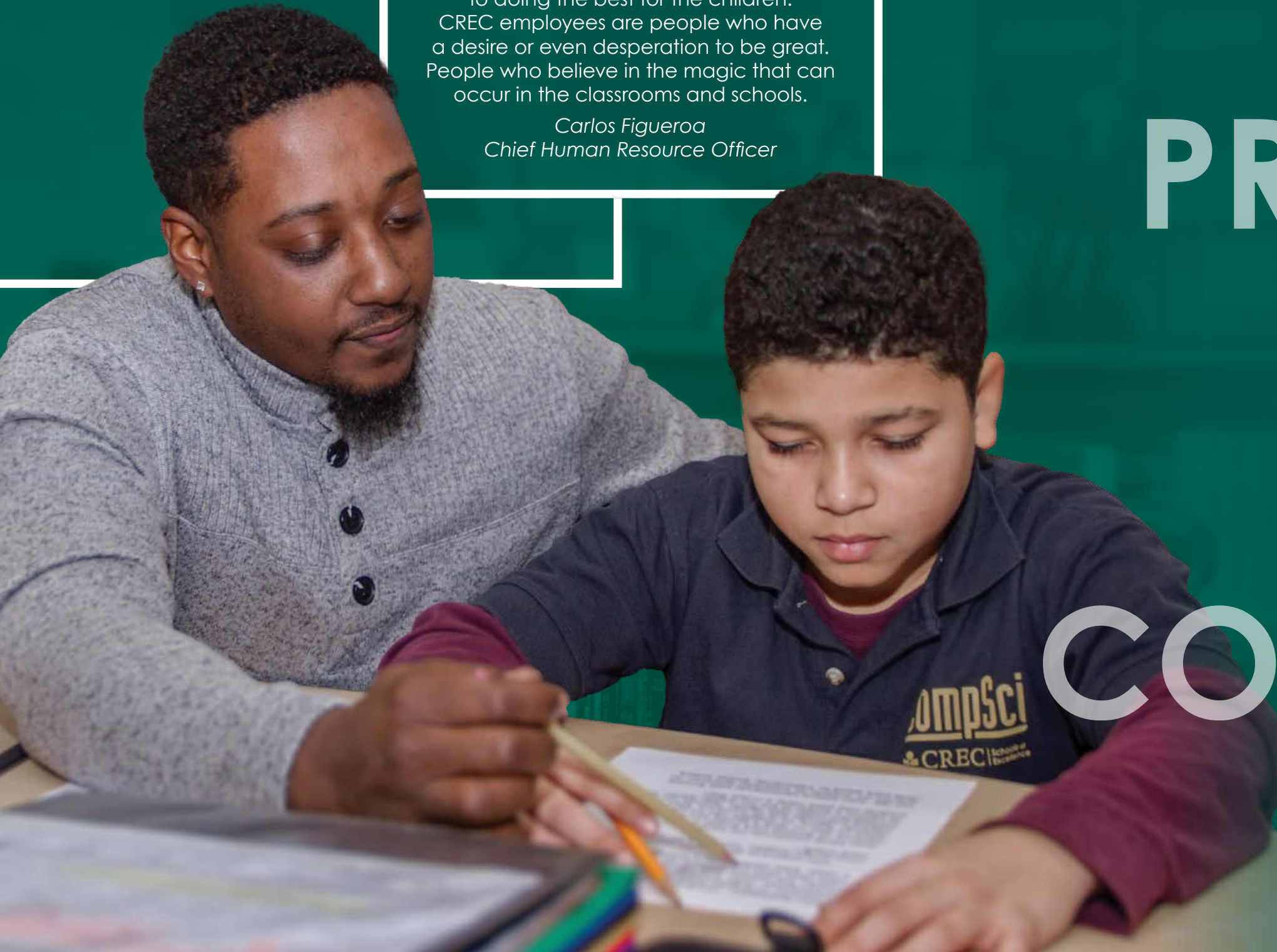
People at CREC have a clear understanding of what they do, and are

**100%
COMMITTED**

to doing the best for the children. CREC employees are people who have a desire or even desperation to be great. People who believe in the magic that can occur in the classrooms and schools.

*Carlos Figueroa
Chief Human Resource Officer*

SCHOOLS PROGRAMS PEOPLE COMMUNITY



SCHOOLS



**There's no I
in TEAM.**

There's no I in TEAM. There's no I in TEAM.
CREC is a unit.

Let's do this!

Vanessa Logan,
CREC Paraeducator of the Year 2023

SCHOOLS

1



6



9



7



8



CREC Magnet Schools seniors boasted a

93.1%

four-year graduation rate, 4.2% better than the state of Connecticut overall.

2



3



4



5



1 CREC DISCOVERY ACADEMY STUDENTS honored the heroics of Ruby Bridges by celebrating "Walk to School Day."

2 CREC PRESCHOOL AT PROGRESS DRIVE was born this school year as another option for direct pathways to Kindergarten at three CREC schools.

3 CREC UNIVERSITY OF HARTFORD MAGNET SCHOOL showcased their grade 2-5 Cheer and Step team at their first ever Pep Rally.

4 CREC ACADEMY OF INTERNATIONAL STUDIES celebrates their middle school softball conference championship. Go Dragons!

5 CREC ACADEMY OF AEROSPACE AND ENGINEERING High School Boys Soccer celebrates their second straight conference championship. Go Jets!

6 CREC MUSEUM ACADEMY hosted their annual exhibition night.

7 CREC ANA GRACE ACADEMY OF THE ARTS Elementary students performed at their Winter Intermezzo.

8 CREC STUDENTS represented proudly at the state capitol to voice their support of House Bill 5003 in front of the Connecticut General Assembly.

9 GLASTONBURY-EAST HARTFORD MAGNET SCHOOL Students were treated to a whole week of arts enrichment for Bushnell Week with visiting artists focusing on cartooning, quilting, singing, and hip hop dance.

PROGRAMS

Embrace FEAR.

There's no success without pain; there's no success without fear. With every lesson of pain or discomfort is an

opportunity
for growth.

*Dana Turnquest
Student Affairs Coordinator
CREC Magnet Schools*



PROGRAMS



1. JOHN J. ALLISON JR. POLARIS CENTER hosted its first ever Social Justice Art Show.

2. CREC'S ANNUAL MEETING met in-person for the first time since 2019.

3. CREC HUMAN RESOURCES hosted six career fairs throughout the year, including this one in March at CREC Academy of Aerospace and Engineering for certified candidates.

4. MONTESSORI TRAINING CENTER NORTHEAST hosted an Open House in their new space at The Atrium in Bloomfield.

5. CONNECTICUT TEACHER RESIDENCY PROGRAM held their First Annual Alumni Conference and Reunion at Southern Connecticut State University.

6. CREC DISCOVERY ACADEMY hosted a panel discussion on the value of magnet schools and a tour of their school for legislators including Commissioner of Education Charlene Russell-Tucker and State Representative Jeff Currey.

7. CREC GREATER HARTFORD ACADEMY OF THE ARTS HALF-DAY PROGRAM put on their annual Fall showcase.

8. CREC'S US MILITARY COMMUNITY EMPLOYEE NETWORK GROUP orchestrated a flag-raising ceremony for Veteran's Day.

410

of our youngest children were evaluated for services by CREC's Birth to Three department.



1,247

educators participated in CREC Resource Group's free professional learning Councils focusing on curriculum, early childhood, English language learners, equity, literacy, library media, math, science, social studies, and Social Emotional Learning.

PEOPLE



CREC's values, mission, and vision

are not only written on paper, but we live and apply them in our interactions every day with students, families, and our community.

Maria Rivera
CREC Teacher of the Year 2023

PEOPLE

1



1. THE CONNECTICUT TEACHER RESIDENCY PROGRAM welcomed their new residents and mentors at orientation.

2. CREC HUMAN RESOURCES partnered with Central Connecticut State University's Continuing Education Program for project management training for over 30 employees.

3. CREC ATHLETICS Citizen-Athletes of the Week from throughout the year were honored at a Hartford Yard Goats game.

4. CREC MONTESSORI MAGNET SCHOOL held a Mock Protest for Racial Justice Action Week.

5. CREC ACADEMY OF INTERNATIONAL STUDIES Black and Latino Studies students welcomed Governor Ned Lamont and Commissioner of Education Charlene Russell-Tucker for a press conference to kick off Black History Month.

6. CREC HIGH SCHOOL STUDENTS celebrated inclusion at the second annual Pride Prom hosted at Hartford City Hall.

7. CREC MUSEUM ACADEMY students get a beatboxing lesson from the Academy of Noise.

8. CAROLE KERKIN retired from her position as Assistant Superintendent for Pupil Services after over 25 years with CREC.

9. TEACHER AND PARAEDUCATOR OF THE YEAR were announced in June. Congratulations to Teacher of the Year Maria Rivera from CREC Academy of Aerospace and Engineering Elementary and Paraeducator of the Year Vanessa Logan from CREC Academy of Computer Science and Engineering Middle School.

5



6



7



8



32
CREC employees were trained in Project Management Essentials through a partnership with Central Connecticut State University

2



3



4



9



CREC's dedication and commitment to education, passion for teaching, and

unwavering support for students

is truly commendable.

Tyron Harris
East Hartford Board of Education
CREC Council Chair



COMMUNITY

COMMUNITY



1500

backpacks full of schools supplies were handed to over 700 families at our 2022 Back to School Block Party



1. **CREC FAMILY RESOURCE CENTER** hosted their annual holiday gathering at the YG Club at Dunkin Park.
2. **THE ANNUAL BACK TO SCHOOL EVENT** returned to the Block Party format and provided resources and backpacks to over 1500 students.
3. **THE HARTFORD REGION OPEN CHOICE PROGRAM** honored students at their annual spring Youth Empowerment Brunch.
4. **CREC ACADEMY OF SCIENCE AND INNOVATION** opened their community food pantry in September as part of a partnership with Stop & Shop.
5. **CREC COMMUNITY EDUCATION SERVICES** honored graduates of their Veterinary and Medical Office Assistant Programs in Partnership with Manchester Community College.
6. **CREC ACADEMY OF AEROSPACE AND ENGINEERING'S** step team performed at the CREC Magnet School's Racial Justice Action Showcase at the Wilson-Gray YMCA.
7. **CREC MONTESSORI MAGNET SCHOOL** introduced families to community partners at their Community Night event.
8. **CREC SCHOLAR ATHLETES** were honored for their work off the field in the classroom at a Hartford Athletic Soccer Game.
9. **CREC VOLUNTEERS** work on a Vine Street house for ReBuilding Together Hartford.
10. **CREC SCHOOL CHOICE** became the first ever sponsor of the Community Board at Parkville Market in Hartford.

CREC Foundation

The CREC Foundation Golf Invitational and Scholarship Dinner was a remarkable event. Scholarships were awarded to students who had experienced and overcome adversity. Five students received college scholarships, which are renewable for up to four years, with an average scholarship amount of \$6000.

A special thank you goes to the Title Sponsors: The Sullivan Investment Group, Transamerica, and Scholarship Dinner Co-Chairs Sasha Douglas and Shawn McMahon.

In terms of Innovation Grants, the CREC Foundation provided innovation mini-grants to ignite new ideas. Notably, the CREC Pride Prom received funding to host an in-person student event for CREC students in grades 9-12, affirming and celebrating CREC's LGBTQIA+ youth. The event was a success, with 187 students attending the first Pride Prom.

Under the banner of CREC Cares, our employee benevolence program, support was extended to CREC Community members in need. Over 100 families received assistance with emergency housing, clothing, funeral expenses, and food. This crucial support was made possible by the collective generosity of the CREC community.



Illuminating
Young Lives
Through
Music



OVER
\$57,000

were awarded through the CREC Foundation and the Hartford Region Open Choice Program to students who attended high school in the region to help achieve college goals

Individual Donors

Philip J and Linda A Adams
 Karen Adrian
 Denise Agramonte
 Whitney Agyeman
 Christopher Alexander
 Amato Aliberti
 Ashley Almeida
 Aura Alvarado
 Amanda Ambrosion
 Deborah Anderson
 Erin Andrus
 Peter J and Karen A Arborio
 Moriha Aronowitz
 Suzanne Artis
 Edward and Alyce C Arum
 Susan Ashe
 Susan M. Austin
 Michael Atkinson
 Jay Barbuto
 Jean Barresi
 Gerald Barrett
 Christopher Bate
 Dayna Beal
 Diana Beardsley
 Janice Bell
 Joseph and Anjanette Belmonte
 Elaine M Bergeron
 Delixandra Bermudez-Mendez
 Kevin Berstene
 Bhanmatie Bhoj
 Gregg Blackstone
 Cary P and Stacy L Blocker
 Stacy Blocker
 Jacqueline Bloomfield
 Mellissa Bocek
 Gricel Bodden
 Arielle Booker
 Deborah Bordeau
 Stephen Bordeau
 Debra Borrero
 Callie Bostic-Gardner
 Steve Bowen
 Elaina Brachman
 Bethany Braunstein
 Rowna Bravo
 Joseph H and Wendy Ellen Bray
 Christine D Bray-Smith
 Kimberly Brewer
 Thomas Brodnitzki
 Darnell Brown
 Patricia Bunk
 Alysa Burke-Worthy
 Shelby Caballero
 Desmond Caldwell
 Christopher Campbell
 Mary Candeias
 Mark D and Erica P Cantin
 Toussaint Careathers
 Tanya Carrafiello
 Gemma Casciano
 Sara Castle
 Ana Castro
 Nicole Castro

Pierrette Centeno
 Gina Chace
 Joy Chlus
 Julie Christianson
 Alison Cianciolo
 Jerome Clapis
 Michael Clapis
 Kelly-Ann Clark
 Andrea Clarke
 Glorimar Claudio
 Paul Colbenson
 Julio and Maria Colon
 Dr. Tuesday L Cooper
 Storm Cooper
 Charles Copeland
 Anna Cotton
 Norlean Cozzolino
 Mellissa Craig
 Eric Crawford
 Lishamarie Cruz
 Sandra Cruz-Serrano
 Cheryl J Cuning
 Kimberly Davis
 Francesca Day
 Flor De Hoyos
 Bryan De La Cruz
 Evelyn De La Cruz
 Joel Defjong
 Joseph Depasqua
 Maureen Depierro
 John A and Elizabeth R Dillingham
 Maris Dillman
 Joy DiMaria
 Kimberly A and John Dinoia
 Sharon Disilvestro
 Eva Doll
 Raffaele and Angelina Donato
 Heather Doucette
 Bruce E and Allison K Douglas
 Sasha Douglas
 Mark Dougherty
 Celcilia Dowd
 Aleta Dubecky
 Christopher Dubois
 Patrick W and Joan S Duffy
 Catherine E and Thomas Duquette
 Charles Dye
 Kathleen Dyer
 Michele Eathorne
 Aaron Ellerbe
 Millissa Ellis
 Lisa Ellison
 Patricia L McManus and
 Aaron E Engel
 Jeannette Estrada
 Andre Ezell
 Renita Ezell
 Michelle Farr
 Erin Farrell
 Carlos Figueroa
 Sarah Fitzsimons
 Susan Flanagan
 Greg Florio

Rose Florio
 Jonathan Fontaine
 Alicia Forde
 Christopher Fox
 Donald K and Patricia
 M Fricchione
 Robin Frost
 Annette Fulk
 Jestine Funnie-Berger
 Danielle Garcia
 Laura A Giannini
 Christine Giannoni
 Tanya Gilman
 Marisa Gonzalez
 Laura Gray
 Frances Gutierrez
 Marlene Guzman
 Claire Hamel
 Donna Hamre
 Karen Harrigan
 James J and Doreen A Harrison
 George and Phyllis F Hary
 Gregory Hastings
 Kurt Hatem
 Linda Helmke
 Nilda Hernandez
 Yesenia Hernandez
 Josiah Hills
 Marla Hinz
 Eric Hoffman
 Denise Holter
 Joan Hurley
 Jeffrey Ivory
 Jennifer Jepsen
 Adam Johnson
 Courtney Johnson
 Holly Jones
 Kristina Jordan
 Kristen Juda
 Emma Judd
 Catherine Kadrlle
 Ronald Kahn
 Amy Karwan
 Evan Katz
 Sharon Keenan
 Laura Kelliher
 Carole Kerkin
 Giovannina Koch
 Senada Korkutovic
 Gary Kutz
 Anthony Kydd
 Shauna Landrigan
 Cynthia Lapalme
 Jason Larose
 Sarah Larsen
 Daniel and Dorothy Larson
 Jeffrey D Larson
 Brenda Laureano-Geer
 Tanya LaVallee
 Zachary Lavin
 Peter J and Judy Y Lawson
 Verna L Ledouz
 Chellie Leslie

Edna Levy
 Niti Lindsay
 Valarie A Lishnak
 Dana Little
 Daysi Lora
 Kelly Maio
 Latoya Malcolm
 Juana Maldonado
 Audrey I and Joseph Mancini
 Penny Manion
 Dina Marques-Bruce
 Michael Martin
 Patricia Martineck
 Laura Martinez
 Marianne Martinez
 Vanessa Matos
 Nora Matthews
 Kerry Mattson
 Heather McBride
 Charles J and Dawn E
 McCarthy, III
 Stacey McCorison
 Kelly McDermott
 Paula McDonald
 Brandon McGee
 Jo McHugh
 Suzanne McKinstry
 Kimberly Mearman
 H.S. Melonopoulos
 Alexa Melonopoulos Fleury
 Alejandra Mengol
 Gloria Mengual
 Richard and Monica Merlino
 Andrea Middlebrooks
 Anne M and Paul G Milette
 Jeffery and Maria Milanez Miller
 Santana Miller
 Ada Miranda
 Albina Mmao
 David C or Regina E Momnie
 Michael Morales
 Michelle Moss
 Kathleen Murphy
 Barbie Nadal-Cristofaro
 Antonio Napoleone
 Nicole Natale
 Katherine Nazario
 Yadira Negron
 Michele Neild
 Dana Nenninger
 Leah Nenninger
 Celia Noe
 Kristen Nolan
 Edward J and Christine O'Connor
 Lauren O'Leary
 Kara Ogonji
 Adrienn Olmstead
 Michele Oullette
 Sandra Oullette
 Sixmaritt Pagan-Pena
 Akanksha Pandey
 Robert Partain
 Denise Patterson

Christine Pearson
 Amy Pecora
 Danielle Perry
 Marquisha Person
 Elaine Pertillar
 Brittany Plummer
 Curtis Porter
 Kennan Poulakos
 Nikiesha Powell-Encarnacion
 Melissa Prochnicki
 Claudia Provenzano
 Diane Provenzano
 Katherine Raftery
 Lindsey Ramos
 Kathleen Randall
 Elizabeth Reed-Swale
 Gladys Rivera
 Ivette Rizza
 Chelsea Roberts
 Glynis Roberts
 Kimberly Roberts
 Patrick Robitaille
 Jerel and Denise Rocktaschel
 Luis Rodriguez
 Yolanda Rodriguez
 Maria Rosa
 Michelle Rose
 Qustin Rowland

Tina Ruggerio
 Christine Ruman
 Angiolina Russo
 Shelly Rustek-Esten
 George Sailor
 Pamela Sailor
 Yllka Sakaj
 Kelly Sanchez
 Carmen Santana Ortiz
 Nadine M Schaber
 Christopher Scoppetta
 Shandra Scott-Brown
 Sarah Seals
 Grace Serrano
 Richard Serrano
 Kim Shea
 Gary J Shettle
 Whitney Simmons
 Alicia Simpson
 Myriam Slattery
 Kerrian Smith
 Masoumeh Soleimani Amirshकारी
 James Springer
 Tenia Spruill
 Kurt Stanco
 Sonya Stanford
 Stacy Stefanowich
 Sara Steinberg Forman

Ellen Stevenson
 Nakisha Strickland
 Nilda Suarez
 Jessica Sullivan
 John Sullivan
 Maxine Sullivan
 Thomas Sullivan
 Timothy Sullivan
 Dave Sutherland
 Heather Tartaglia
 Carolyn Taylor
 Ratosha Terry
 Alan W and Donna Theriault
 Jane Theriault
 Mohamed Jamaludden
 Thirapusa Mohaideen
 Rudolph Thomas
 E. Mason Thrall
 Jennifer Tierney
 Alfredo Torres
 Jennifer Traks
 Rebecca Trapp
 James E Tremble
 Marilyn R and Richard W Tripp
 John Tusch
 Freddie Valentin
 Paul H. Vanasse
 Wanda Vargas

Gemma Varney
 Samantha Vaughan Williams
 Spiros Vellios
 Sarah Vocca
 Glenn E and Courtney K Warner
 Maryam Wassil-Wardak
 Colleen Webber
 Nicholas Wert
 Kelly Whitman
 Angela and Michael White
 Beulah Wiggins
 Akilah Williams
 Nattaneal Wilson
 Teresa Wilson
 Elizabeth Windsor-Post
 Jill Wnuk
 Darlene Wolliston
 Andrea Wright
 John or Shirley Wright
 David Wu
 Carolyn Yakaitis
 Kathryn Zadrowski
 Jill Zaino
 Kevin L and Cynthia M Zingler

2022-2023 CREC

Funding Agencies

Adella & Alfred Giller Charitable Trust
 Amazon Smiles
 American Online Giving Foundation
 Amplify / LEGO
 Ana Grace Project, Inc.
 Aquila's Nest Vineyards LLC
 Barr Foundation
 Blackbaud Giving Fund The
 Branford Dental Care
 Brown Rudnick Charitable Foundation
 Building Confident Learners LLC
 C&C Janitorial Supplies, Inc.
 California Casualty Management Co
 Charities Aid Foundation America
 Church of the Good Shepherd, Rector's
 Discretionary Fund
 Community Foundation of Tampa Bay, Inc.
 Connecticut Academy of Science and
 Engineering

Connecticut Dance Academy LLC
 Connecticut Education Association
 Connecticut Humanities Council, Inc.
 Customink LLC
 Delta-T Group Hartford, Inc.
 Dollar General Literacy Foundation
 DWC Home & Property Improvement LLC
 Earthlight Technologies LLC
 Fidelity Charitable
 Gordon Bonetti Florist, Inc.
 GotSneakers, LLC
 Hartford Athletic LLC
 Hartford Foundation for Public Giving
 Hartford Lodge No 19 BPO Elks
 Hear Here Hartford
 Ion Bank Foundation
 Jones Lang LaSalle America Inc.
 Juniper Homecare, LLC
 Latino Way, Inc.

Madhu Reddy Realty LLC The
 Massucci & Associates, LLC
 Natchaug Hospital
 National Center for Teacher Residencies BEI
 Owens, Renz & Lee Company, Inc.
 Peter Carmen CT TRP
 Peter R. Marsh Foundation
 Progressive Insurance
 Rainbow Graphics
 Raytheon Technologies Charity Custodial
 Roberts Foundation
 RTCX Company, Inc.
 Ryan T. Lee Memorial Foundation, Inc.
 Sullivan Investment Group
 Town of South Windsor The
 Transamerica Retirement Solutions LLC
 Unfold the Soul
 William Casper Graustein Memorial
 Z Rink Sports Foundation, Inc.



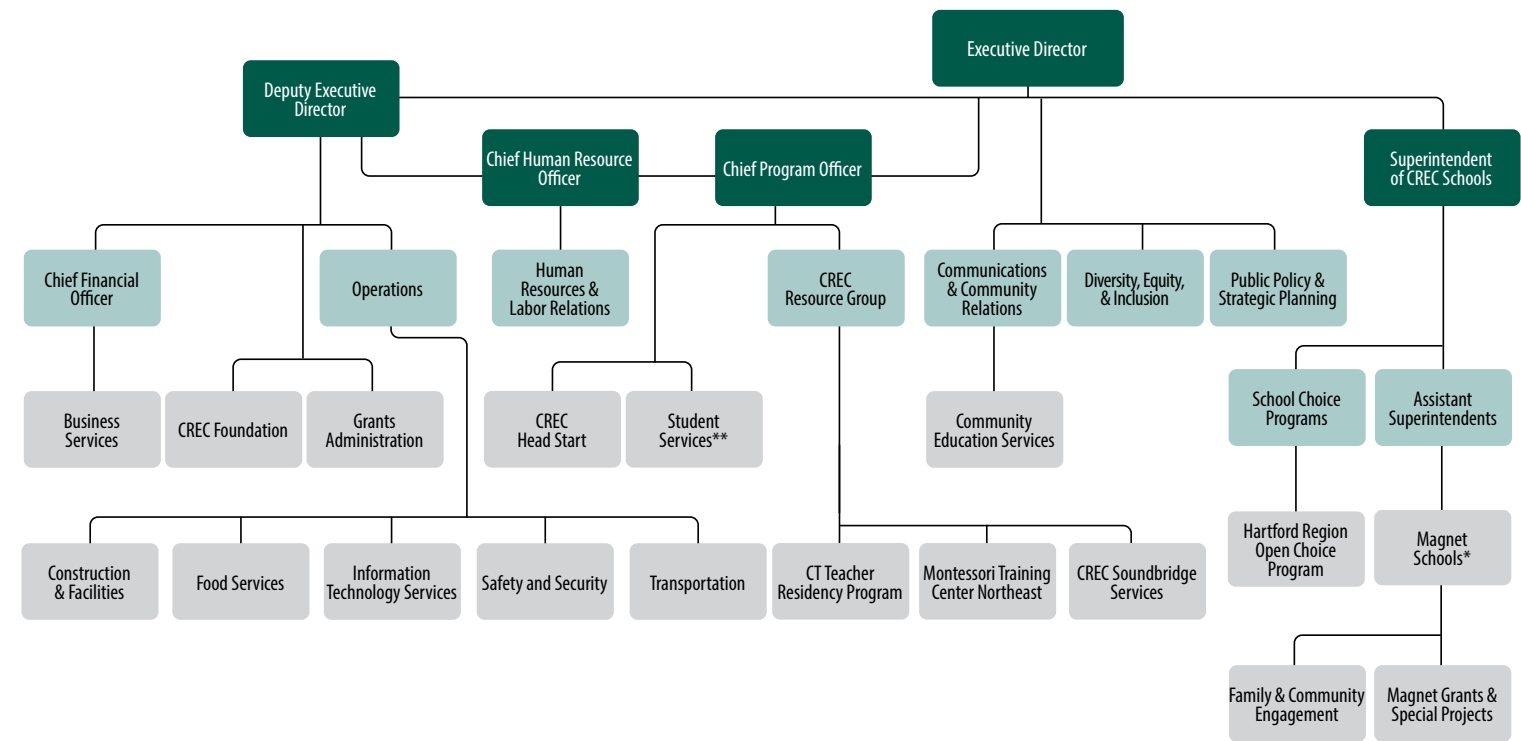
IN MEMORIAM Kristina Jordan, 1977-2023

In June 2023, CREC's Director of School Choice, Kristina Star Jordan, passed away after a prolonged battle with chronic illness. For over 25 years, Kristina was an educational leader promoting racial equity and social justice for systematically marginalized individuals. Kristina was courageous, graceful, and unapologetic in working toward social justice and equity in her communities, especially for children in the New London and Hartford regions.

As Director of School Choice, Kristina built authentic relationships, changed systems, improved environments, established new practices, and ensured equitable access for students and families. She secured substantial funding to ensure that School Choice would continue having a skilled, supportive team to engage with regional partner districts. The message she lived up to was ensuring students feel proud of who they are and where they come from.

After her passing, the CREC's School Choice team and the CREC Foundation worked quickly to set up the Kristina Star Jordan Social Justice Scholarship. This scholarship in Kristina's name recognizes the efforts of a student who participates in the Hartford Region Open Choice Program and is a champion and leader in their district for equity, social justice, and inclusion.

To donate, please visit www.crec.org/kristina



*16 Magnet Schools and 2 Programs

- CREC Academy of Aerospace and Engineering (6-12)
- CREC Academy of Aerospace and Engineering Elementary School (PreK-5)
- CREC Academy of Computer Science and Engineering (9-12)
- CREC Academy of Computer Science and Engineering Middle School (6-8)
- CREC Academy of International Studies (6-12)
- CREC Academy of International Studies Elementary School (PreK-5)
- CREC Ana Grace Academy of the Arts (PreK-8)
- CREC Discovery Academy (PreK-5)
- Glastonbury-East Hartford Magnet School (PreK-5)
- CREC Greater Hartford Academy of the Arts Full Day (9-12)
- CREC Montessori Magnet School (PreK-6)
- CREC Museum Academy (PreK-5)
- CREC Preschool at Progress Drive (PreK 3&4)
- CREC Reggio Magnet School of the Arts (PreK-5)
- CREC University of Hartford Magnet School (PreK-5)
- CREC Academy of Science and Innovation (6-12)
- PROGRAMS —
- CREC Greater Hartford Academy of the Arts Half-Day (9-12)
- CREC Impact Academy (9-12)

**Student Services Programs

- CREC Birth to Three
- CREC Capitol Region Transition Academy
- Farmington Valley Diagnostic Center
- CREC John J. Allison, Jr. Polaris Center
- CREC River Street Autism Program at Birken
- CREC River Street School
- Southern Transition Real-World and Independent Vocational Education (STRIVE)

CREC Stakeholders

- Executive Leadership Team (ELT)
- Departments with members of the Leadership Team
- Departments

REGIONAL COLLABORATION AND PARTNERSHIPS

State Agencies

CT Assistive Technology Project
 CT Board of Education and Services for the Blind
 CT Bureau of Rehabilitation Services
 CT Coalition for the Education of Deaf and Hard of Hearing Children
 CT Commission on the Arts
 CT Commission on Deaf and Hearing Impaired
 CT Commission on Women, Children and Seniors
 CT Cooperative Extension
 CT Departments of:
 Administrative Services; Children and Families; Corrections;
 Developmental Services; Economic and Community Development;
 Education; Energy & Environmental Protection; Health; Labor;
 Public Health and Addiction Services; Social Services; Support
 Services Division
 CT Development Authority
 CT Freedom of Information Commission
 CT Health and Educational Facilities Authority
 CT Husky Health Care
 CT Office of Early Childhood
 CT Technical Education and Career System

Higher Education

Asnuntuck Community College
 Bay Path University
 Bureau of Voc-Tech Schools
 CT Adult Education Programs
 Central Connecticut State University
 Capital Community College
 Charter Oak College
 Goodwin College
 Eastern Connecticut State University
 The Lincoln College of New England's Dental Hygiene Program
 Manchester Community College
 Middlesex Community College
 New York University
 Office of Higher Education
 Quinnipiac University
 Sacred Heart University
 Southern Connecticut State University
 Springfield College
 Trinity College
 Tunxis Community College
 University of Connecticut
 University of Hartford
 University of New Haven
 University of Saint Joseph
 Wesleyan University
 Yale University

Professional Associations

Accreditation Facilitation Project
 Adult Numeracy Network
 After School Network Alliance
 American Association of School Administrators
 American Institutes for Research (AIR)
 American Society of Training and Development
 Association of Education Service Agencies (AESAs)
 Association of Teachers of Math in Connecticut
 Association Montessori Internationale (AMI)
 Bridges Collaborative - The Century Foundation
 Commission on Adult Basic Education
 CT Academy of Educational Leaders
 CT Administrators of Programs for English Language Learners
 CT Association of Adult and Continuing Education
 CT Association of Boards of Education
 CT Association for Children With Learning Disabilities
 CT Association for the Education of Young Children
 CT Association of Nonprofits
 CT Association of Public School Superintendents
 CT Association of School Business Officials
 CT Association of School Personnel Administrators
 CT Association of Secondary Schools
 CT Business and Industry Association
 CT Child Care Training Academy
 CT Council of Administrators of Special Education
 CT Council on Developmental Disabilities
 CT Council of Leaders of Mathematics
 CT Education Association
 CT Parent Advocacy
 CT Principals' Academy
 CT Quality Council
 CT School Building and Grounds Association
 CT School Public Relations Association
 CT School Transportation Association
 CT Teachers of English to Speakers of Other Languages
 East Hartford CONNects
 Farmington Valley Retired Teachers Association
 Gay, Lesbian, and Straight Education Network (GLSEN)
 Guild of IB Schools Northeast (GIBS)
 Hartford Area Superintendents Association
 International Association of Psychosocial Rehabilitation Services
 Learning Forward CT
 Magnet Schools of America
 Microsoft
 National Commission on Adult Basic Education
 National Coalition for Literacy
 National and CT Associations for the Education of Young Children
 New England Parent Information Education
 Northeast Educational Research Association
 Prospanica
 Raising Readers Beginning with Books
 School Nutrition Association of CT
 University Center for Excellence in Developmental Disabilities

Legislative

Advisory Committee on Intergovernmental Relations (ACIR)
 Connecticut General Assembly

Local and Regional Agencies

African Caribbean American Parents of Children with Disabilities (AFCAMP)
 Capital Area Substance Abuse Council
 Capital Region Workforce Development Board
 Capitol Region Council of Governments
 Career Resources
 Catholic Family Services
 Celebration Foods
 Child Health and Development Institute of Connecticut (CHDI)
 CHR (Community Health Resources)
 Connecticut Association of Schools
 Connecticut Association of Supervision and Curriculum Development
 Connecticut Center For School Change
 Connecticut Historical Society
 Connecticut Parent Advocacy Center (CAPC)
 Connecticut Puerto Rican Forum
 Connecticut Women's Education and Legal Fund
 Co-Opportunity, Inc.
 EESmarts/Eversource
 Foodshare
 Greater Hartford Arts Council
 Greater Hartford Legal Aid
 Greater Hartford Transit District
 Greater Hartford YMCA
 New Britain YMCA
 Hartford Area Child Care Collaborative
 Hartford Consortium for Higher Education
 Hartford Foundation for Public Giving
 Leadership Greater Hartford
 Manchester Historical Society
 MetroHartford Regional Economic Alliance Metropolitan
 District Commission
 Midstate Medical Center
 National Center for Family Literacy
 New England Assistive Technology
 New England Regional Literacy Resource Center
 Northeast and Islands
 Pitney Bowes Foundation
 Regional Laboratory for Educational Improvement
 of the Riverfront Recapture
 Riverfront Recapture
 Southend Institutions Neighborhood Alliance (SINA)
 State Education Resource Center
 The Workforce, Inc.
 United Illuminating
 United Way of Central and Northeastern Connecticut
 University of Connecticut Health Center
 Urban League of Greater Hartford
 VOCAL
 We Care Computers, LLC

Hartford Agencies and Organizations

Compass Youth Collaborative
 City of Hartford
 Coalition to Strengthen Sheldon/Charter Oak Neighborhood
 Community Health Services
 Community Renewal Team
 CT Center for Nonviolence
 Harriet Beecher Stowe Center
 Hartford District Parole Office
 Hartford Hospital
 Hartford Multicultural Center
 Hartford Public Library
 Hartford Stage
 Institute of Living
 Mark Twain House and Museum
 Old State House
 St. Francis Hospital
 The Bushnell
 Trinity Health of New England

Federal Agencies

Environmental Protection Agency
 National Aeronautics & Space Administration
 U.S. Department of Education
 U.S. Department of Housing & Urban Development

Regional Educational Service Centers

CREC is one of six Regional Educational Service Centers (RESCs) in Connecticut. Membership in one RESC enables a district to access the programs and services from other RESCs if those services are not available within their region. CREC works with the following RESCs as an Alliance to provide services to virtually every public school district in Connecticut.



Budget Statements

FISCAL YEAR ENDING
JUNE 30, 2023

PROGRAM	AMOUNT	PROGRAM	AMOUNT
General Fund Programs		Special Revenue Fund Programs	
Academy of Aerospace and Engineering	15,783,268	21st Century Learning Centers	
Academy of Aerospace and Engineering		Before-and-After School	745,153
Elementary Magnet School.....	10,256,519	American Rescue Plan - Elementary and	
Academy of Science and Innovation.....	15,099,906	Secondary School Relief (ARP - ESSER) Grant	12,743,829
Ana Grace Academy of the Arts		Capitol Region Choice Program	15,617,453
Elementary School.....	9,850,511	Community Education Services	1,011,364
Ana Grace Academy of the Arts		Connecticut Technical High School System	
Middle School.....	7,640,857	Related Services.....	3,281,090
Capitol Region Transition Academy	357,221	CT Office of Early Childhood Education	3,292,233
Central Office Facility Cost Center	11,391,561	CT Teacher Residency Program.....	1,743,026
Communication Office	995,618	Developing Tomorrow's Professionals/Perkins/ Financial Literacy.....	187,505
CREC Academy of Computer Science & Engineering HS.....	11,902,971	Early Education.....	570,401
CREC Academy of Computer Science & Engineering Middle School MS.....	13,479,845	Early Intervention Birth to Three Services.....	2,013,610
CREC Academy of International Studies (6-12)	14,522,431	Early/Head Start Program	15,119,550
CREC Academy of International Studies		Elementary and Secondary	
Elementary.....	9,315,168	School Relief (ESSER II) Grant	863,441
CREC Preschool at Progress Drive	2,950,000	Entitlement Grants	1,974,017
Discovery Academy	9,843,699	Impact Academy/Barr Foundation.....	303,207
Executive Office.....	543,270	Learner Engagement & Attendance Program (LEAP)	1,887,052
Farmington Valley Diagnostic Center	1,389,015	Magnet Schools Assistance Program	3,115,153
Glastonbury/East Hartford Magnet School	8,938,134	Project Prevent	1,173,621
Grants Office.....	324,808	Regional Trauma Coordinators.....	1,200,000
Greater Hartford Academy of the Arts (GHAA).....	16,833,176	SDE Early Childhood Program	5,403,070
Human Resources office	1,568,752	Sheff Technical Services Agreement.....	4,877,543
Integrated Program Models (IPM)	2,392,390	Statewide Family Engagement Center	1,741,080
Learning Corridor Campus	5,157,029	Supplemental Services.....	871,994
Made in the Shade.....	73,000	Wallace Foundation: Closing Opportunity Gaps for Adolescents	175,000
Magnet School Cost Center.....	36,050,202	Youth Service Programs	1,146,660
Montessori Magnet School.....	7,816,963	Special Revenue Fund Subtotal	\$81,057,052
Museum Academy	9,308,595	Capital Projects Fund Programs	
Office of Finance and Operations.....	5,102,753	Ana Grace Academy of the Arts, formerly Two Rivers Magnet High School	2,887,632
Polaris Center	5,401,828	Capital Projects Fund Subtotal	\$2,887,632
Reggio Magnet School of the Arts	9,778,756	Enterprise Fund Programs	
River Street School (RSS).....	35,910,375	Construction Services	413,200
School Transportation Management Services.....	20,220,000	CREC Resource Group	9,914,465
Soundbridge.....	2,736,025	Learning Corridor Theater	97,000
STRIVE	598,440	Montessori Training Center of New England	2,089,650
Student Services	689,024	Regional Fingerprinting Services.....	124,000
Transportation Services	7,938,670	Enterprise Fund Subtotal	\$12,638,315
University of Hartford Magnet School (UHMS)	9,942,999	SUMMARY BY FUND TYPE	
General Fund Subtotal	\$322,103,779	General Fund.....	322,103,779
		Special Revenue Fund.....	81,057,052
		Enterprise Fund	12,638,315
		GRAND TOTAL WITHOUT CONSTRUCTION	\$415,799,146

Projected Budget Statements

FISCAL YEAR ENDING
JUNE 30, 2024

PROGRAM	AMOUNT	PROGRAM	AMOUNT
General Fund Programs		Special Revenue Fund Programs	
Academy of Aerospace and Engineering	16,620,462	Capitol Region Choice Program	16,088,480
Academy of Aerospace and Engineering		Community Education Services	1,005,070
Elementary Magnet School.....	10,951,369	Connecticut Technical High School System	
Academy of Science and Innovation.....	16,316,592	Related Services.....	4,372,852
Ana Grace Academy of the Arts		CT Office of Early Childhood Education	3,166,595
Elementary School.....	10,304,362	CT Teacher Residency Program.....	1,879,995
Ana Grace Academy of the Arts		Early Education.....	570,401
Middle School.....	7,754,349	Early Intervention Birth to Three Services.....	1,865,920
Central Office Facility Cost Center	11,304,580	Early/Head Start Program	9,537,143
Communication Office	1,060,350	Impact Academy/Barr Foundation.....	345,632
CREC Academy of Computer Science & Engineering HS.....	12,782,266	Learner Engagement & Attendance Program (LEAP)	298,073
CREC Academy of Computer Science & Engineering Middle School MS.....	14,017,833	Magnet Schools Assistance Program	795,131
CREC Academy of International Studies (6-12)	15,696,378	Office of Early Childhood: Infant and Toddler Classrooms	1,254,725
CREC Academy of International Studies		Project Prevent	1,684,704
Elementary.....	9,304,690	SDE Early Childhood Program	5,255,435
CREC Preschool at Progress Drive	3,078,459	Sheff Technical Services Agreement.....	4,714,222
Discovery Academy	9,886,531	Statewide Family Engagement Center	1,047,765
Executive Office.....	582,957	Supplemental Services.....	707,365
Farmington Valley Diagnostic Center	1,543,412	Wallace Foundation: Closing Opportunity Gaps for Adolescents	55,000
Glastonbury/East Hartford Magnet School	9,027,563	Youth Service Programs	1,215,178
Grants Office.....	370,158	Special Revenue Fund Subtotal	\$55,859,686
Greater Hartford Academy of the Arts (GHAA).....	17,177,635	Capital Projects Fund Programs	
Human Resources office	1,872,191	Ana Grace Academy of the Arts, formerly Two Rivers Magnet High School	600,000
Integrated Program Models (IPM)	315,500	Capital Projects Fund Subtotal	\$600,000
Learning Corridor Campus	5,571,725	Enterprise Fund Programs	
Magnet School Cost Center.....	37,149,877	CREC Resource Group	10,769,610.00
Montessori Magnet School.....	8,125,458	Montessori Training Center of New England	1,536,925.00
Museum Academy	9,633,630	Regional Fingerprinting Services.....	127,200.00
Office of Finance and Operations.....	5,239,081	Enterprise Fund Subtotal	\$12,433,735
Polaris Center	5,407,595	SUMMARY BY FUND TYPE	
Reggio Magnet School of the Arts	9,912,647	General Fund.....	332,657,961.00
River Street School (RSS).....	39,778,830	Special Revenue Fund.....	55,859,686.00
School Transportation Management Services.....	20,700,000	Enterprise Fund	12,433,735.00
Soundbridge.....	2,386,795	GRAND TOTAL	\$400,951,382
STRIVE	597,089		
Student Services	574,430		
Transportation Services	7,349,300		
University of Hartford Magnet School (UHMS)	10,263,867		
General Fund Subtotal	\$332,657,961		

Council Officers



Lydia Tedone
Chair
 Simsbury Public Schools



Tyron V. Harris
Vice Chair
 East Hartford Public Schools



Kim Oliver
Secretary/Treasurer
 Hartford Public Schools

Council Representatives

- Avon – Jackie Blea
- Berlin – Traci Sisti
- Bloomfield – Donald F. Harris, Jr.
- Bolton – Chris Davey
- Bristol – Christopher C. Wilson
- Canton – Louis M. Daniels
- Cromwell – Celina Kelleher
- East Granby – To be appointed
- East Hartford – Tyron V. Harris
- East Windsor – Kate Carey-Trull and Francis Neill
- Ellington – Gary Blanchette
- Enfield – To be appointed
- Farmington – Ellen Siuta
- Glastonbury – Julie Thompson
- Granby – To be appointed
- Hartford – Kim Oliver
- Hartland – To be appointed
- Manchester – To be appointed
- New Britain – Merrill Gay
- New Hartford – To be appointed
- Newington – Bruce Fletcher
- Plainville – Becky Tyrrell
- Portland – Meg Scata and Timothy Lavoy
- Region 10 – John Vecchitto
- Rocky Hill – Dilip Desai
- Simsbury – Lydia Tedone
- Somers – Krista Cherry and Sarah Moynihan Bollinger
- Southington – Robert Brown
- South Windsor – Anitha Elango and Craig Zimmerman
- Suffield – Maureen Sattan
- Vernon – Deborah Rodriguez
- West Hartford – To be appointed
- Wethersfield – Bobbie Hughes-Granato
- Windsor – Leonard Lockhart and David Furie
- Windsor Locks – To be appointed

	Avon	Berlin	Bloomfield	Bolton	Bristol	Canton	Cromwell	East Granby	East Hartford	East Windsor	Ellington	Enfield	Farmington	Glastonbury	Granby	Hartford	Hartland	Manchester	New Britain	New Hartford	Newington	Plainville	Portland	Region 10	Rocky Hill	Simsbury	Somers	Southington	South Windsor	Suffield	Vernon	West Hartford	Wethersfield	Windsor	Windsor Locks	Other
ADMINISTRATIVE SERVICES																																				
Fingerprinting Services
COMMUNITY EDUCATION																																				
Adult & Continuing Education				
CREC RESOURCE GROUP																																				
Cooperative Purchasing
CT PRIME																																				
Curriculum Councils
Increasing Educator Diversity
Professional Development
Staff Brokering
CHOICE PROGRAMS																																				
Hartford Region Open Choice Program
Magnet Schools
STUDENT SERVICES																																				
CREC Birth to Three
CREC Head Start		
CREC John J. Allison Jr. Polaris Center
CREC River Street School
Farmington Valley Diagnostic Center	
CREC Soundbridge
Soundbridge Birth to Three	
STRIVE Program																																				
OPERATIONS																																				
Regional Transportation



Our Mission

Equity, excellence, and success for all through high-quality educational services.



111 Charter Oak Ave., Hartford, CT 06106
860-247-CREC | www.crec.org

fb.com/CRECExcellenceinEducation



[@CRECEducation](https://twitter.com/CRECEducation)

